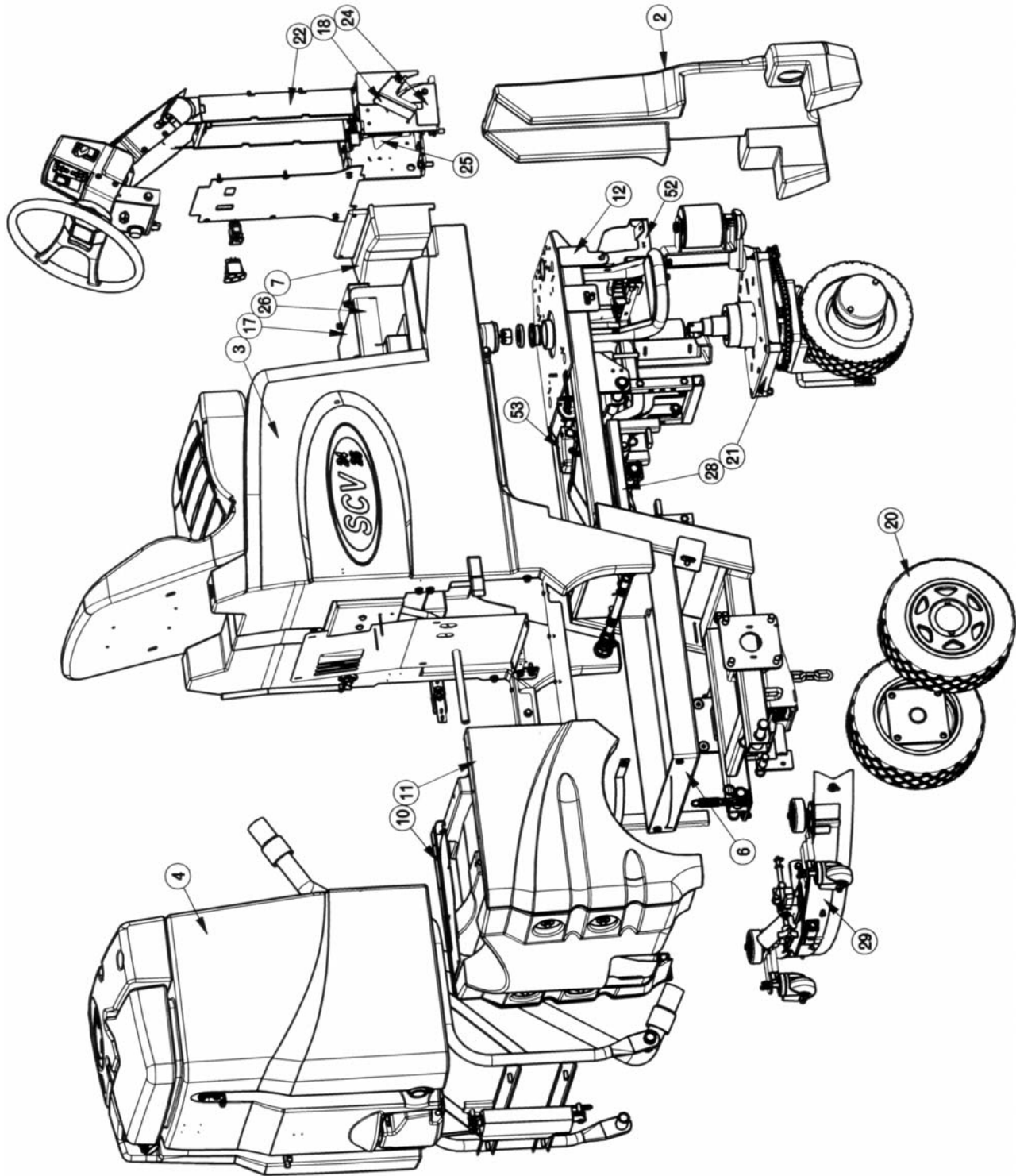


SPARE PARTS CATALOG

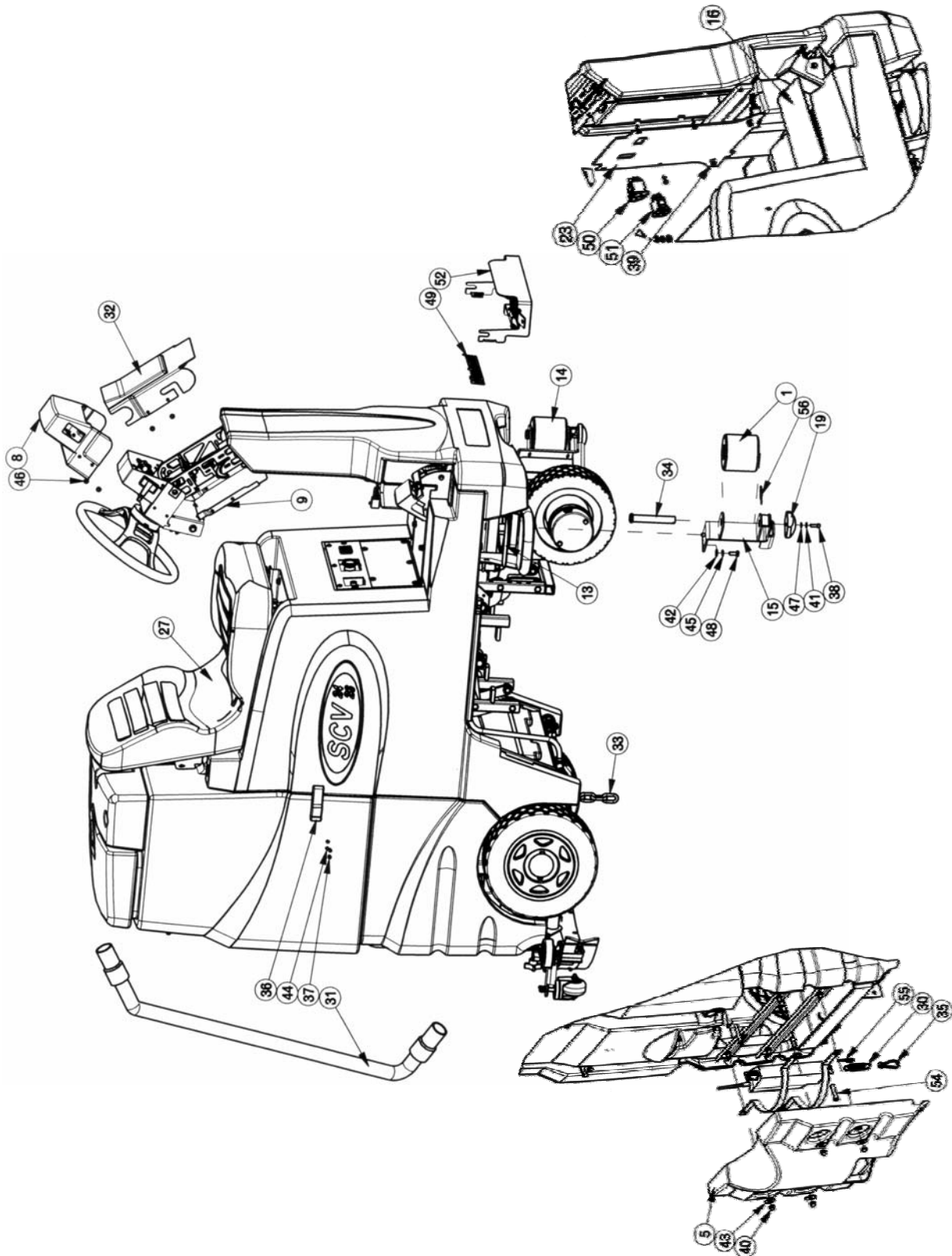


Exploded Views

Main Assembly I

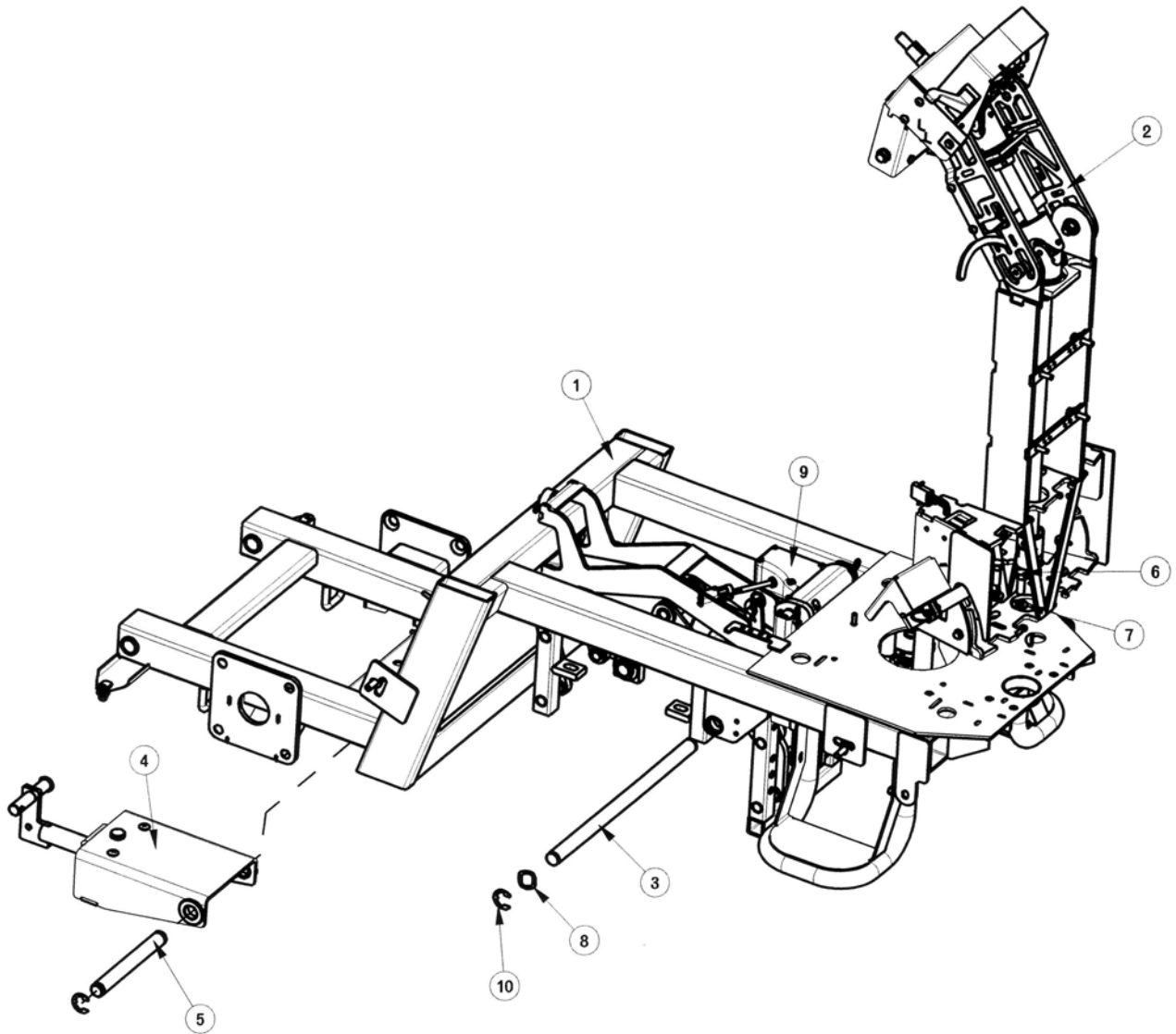


Main Assembly II



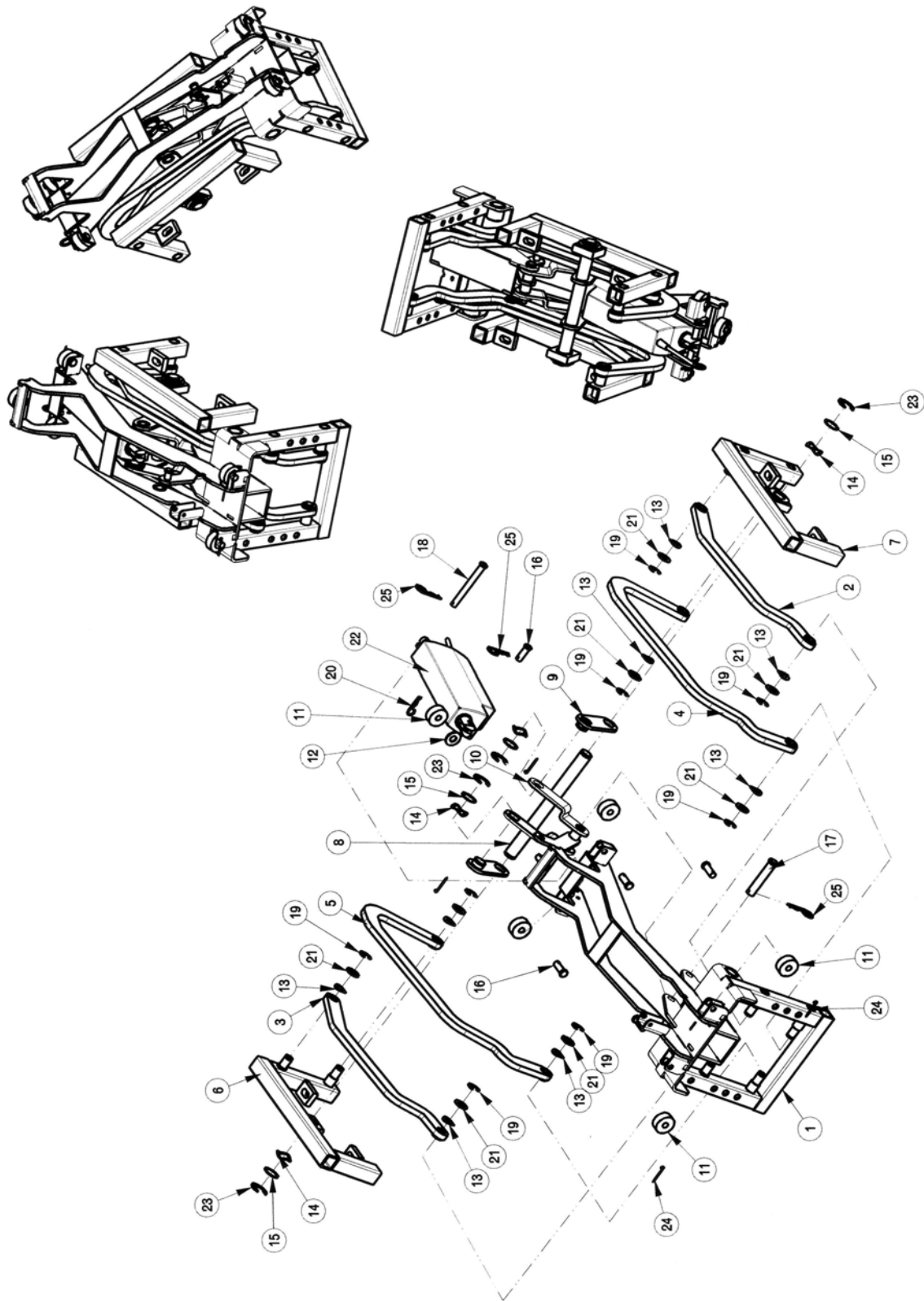
Main Assembly BOM (See Main Assembly I & II)

BILL OF MATERIAL			
ITEM	PART NO.	REQ'D	DESCRIPTION
1	66-436-A	2	RUBBER ROLLER
2	241001	1	BUMPER, FRONT SCV24
3	241012	1	SOLUTION TANK ASSY w/OAW, SCV 24/26
4	241013	1	RECOVERY TANK ASSEMBLY, SCV 24/26
5	241023	1	REAR BATTERY COVER, SCV 24/26
6	241024	1	BATTERY BOX, SCV24/26
7	241025	1	BOTTOM STEERING COLUMN COVER, SCV 24/26
8	241028	1	MAIN STEERING COVER, SCV 24/26
9	241030	1	STEERING COVER BOTTOM, SCV 24/26
10	241045	1	LH BATTERY PANEL ASSY, SCV 24/26
11	241046	1	RH SIDE PANEL ASSY, SCV 24/26
12	241101	1	MAIN FRAME WELDMENT, SCV 24/26
13	241117	2	FRONT FOOT STEP ANTISKID, SCV 24
14	241133	2	ROLLER/ANTI-TIP BRACKET ASSEMBLY, SCV 24/26
15	241134	2	ROLLER/ANTI-TIP BRACKET WELDMENT, SCV24/26
16	241138	1	FOOT REST ANTISKID,SCV 24/26 RH
17	241139	1	FLOOR PANEL ANTISKID, SCV 24/26
18	241143	1	ADJUSTABLE PEDAL ANTISKID, SCV 24/26
19	241151	2	ANTI-TIP PAD, SCV 24/26
20	241201	2	REAR WHEEL ASSY, SCV 24/26
21	241251	1	FRONT DRIVE ASSEMBLY (10"), SCV 24/26
22	241301	1	STEERING ASSEMBLY, SCV 24/26
23	241323	1	REAR STEERING COLUMN COVER, SCV 24/26
24	241324	1	RIGHT FOOT PEDAL AREA COVER, SCV 24/26
25	241325	1	LEFT FOOT PEDAL AREA COVER, SCV 24/26
26	241351	1	FLOOR PANEL WELDMENT, SCV 24/26
27	241365	1	SEAT SUB ASSEMBLY, SCV 24/26
28	241451	1	LINKAGE ASSY W/ACTUATOR, SCV 24/26
29	241701	1	SQUEEGEE MECH ASSY
30	241970	1	SPRING-EXT .75 O.D. X 3.0 F.L. CLOSED ENDS
31	281078	1	HOSE ASSY - SQUEEGEE, SCV 28/32
32	282029	1	STEERING COVER, TOP
33	320996	1	STATIC GROUNDING CHAIN
34	360017	4	3/4" X 4.50 CLEVIS PIN
35	430103	1	SPRING HOOK 2450S
36	450207	2	LATCH, SOFT #C7-10
37	710328	10	SCR-MC 8-32 X .37 ST PL - ROUND HEAD
38	710825	2	SCR-SC 1/4-20 X .75 ST PL
39	711160	6	#10 X 5/8 HI-LO
40	711353	4	NUT, ACORN 5/16-18
41	711504	2	WSR-FLAT 1/4 ID SS
42	711506	6	WSR-FLT .344 X .690 X .062 STL ZINC
43	711507	4	WSR-FLAT .37 X 1.12 X .06
44	711542	10	WSR-HELICAL #8
45	711545	6	WSR-HELICAL 5/16
46	712540	12	SCR-MC TR HD 10-24 X .37 SS
47	712758	2	WSR-HELICAL 1/4 SS
48	713026	2	BLT-HH 5/16-18 X 3/4 #5
49	715385	1	MINUTEMAN LOGO 1.4 X 9.6
50	748201	1	SWITCH, SPDT ILLUM EA DIRECTION
51	748202	1	SWITCH, SPST ILLUM
52	748208	1	CABLE ASSY, DRIVE MOTOR SCV 2426
53	748213-1	1	ACTUATOR, W/WEATHER PACK SCV SQUEEGEE
54	831965	1	3/8 x 1.63" CLEVIS PIN
55	833374	1	PIN, HAIRPIN COTTER 3/8
56	3400661	2	PIN-COTTER 5/8 RUE-RING



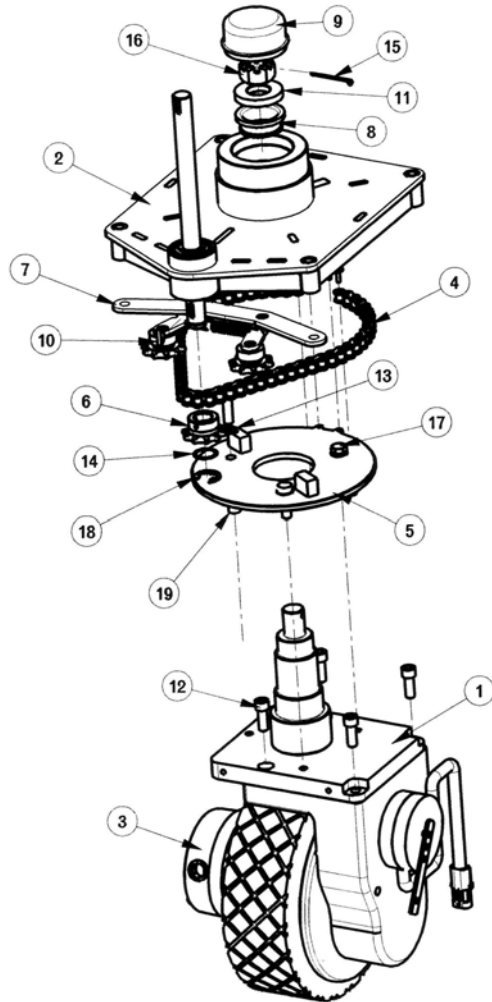
BILL OF MATERIAL			
ITEM	PART NO.	REQ'D	DESCRIPTION
1	241101	1	MAIN FRAME WELDMENT, SCV 24/26
2	241301	1	STEERING ASSEMBLY, SCV 24/26
3	241480	1	LINKAGE ATTACHMENT SHAFT, SCV 24/26
4	241710	1	SQUEEGEE LIFT MECH ASSY, SCV 24/26
5	320909	1	LIFT MECH ASSY PIVOT SHAFT
6	711242	6	BLT-HEX 3/8 -16X1.00 ZP
7	711515	6	WSR-FLAT .406 X .812 X .0625
8	711583	2	WSR-WAVE .78 X 1.00 X .02
9	748213-1	1	ACTUATOR, W/WEATHER PACK SCV SQUEEGEE
10	809148	4	RETAINING RING - "E" TYPE EXT .75

Linkage Assembly



Linkage Assembly BOM

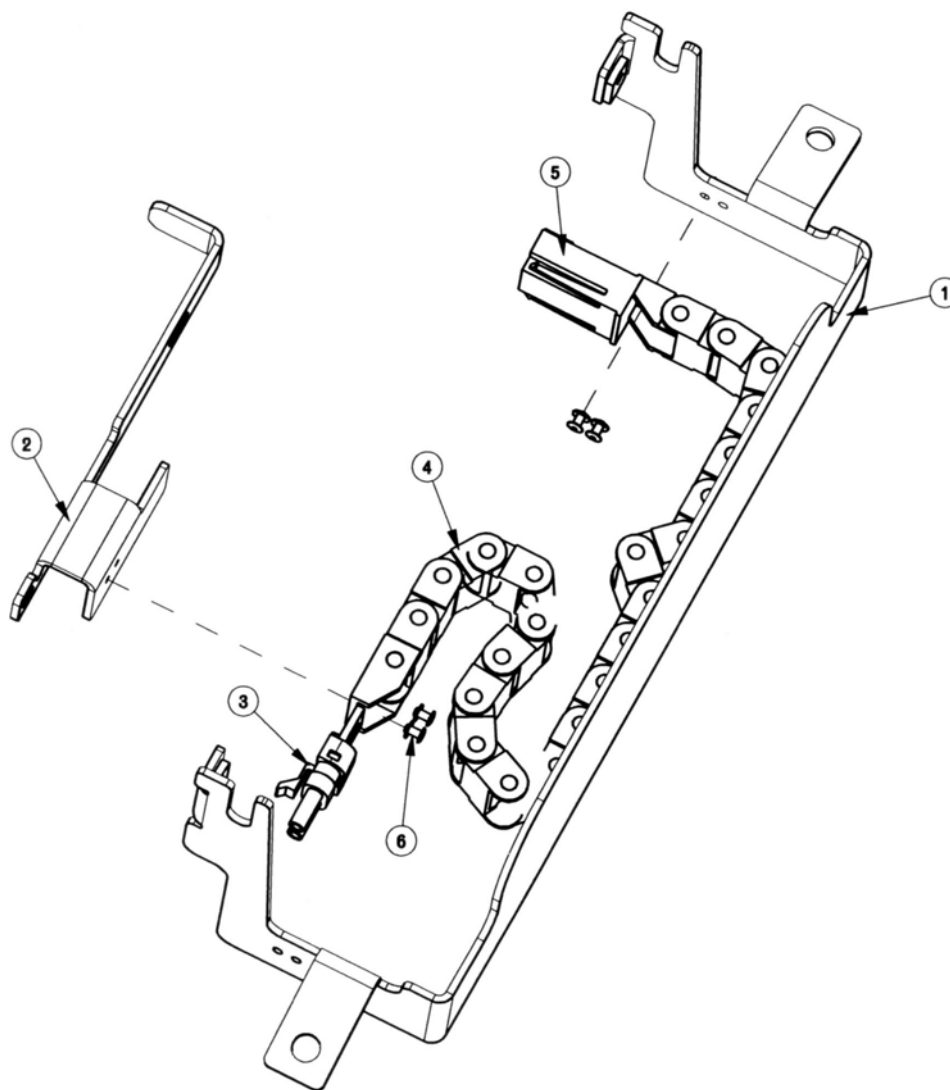
BILL OF MATERIAL - 241451			
ITEM	PART NO.	REQ'D	DESCRIPTION
1	241452	1	FIXED PIVOT WELDMENT, SCV 24/26
2	241462	1	LEFT UPPER LINK ASSEMBLY, SCV 24/26
3	241464	1	RIGHT UPPER LINK ASSEMBLY, SCV 24/26
4	241465	1	LEFT LOWER LINK ASSEMBLY, SCV 24/26
5	241467	1	RIGHT LOWER LINK ASSEMBLY, SCV 24/26
6	241468	1	LEFT LIFT WELDMENT W/BUSHING, SCV 24/26
7	241470	1	RIGHT LIFT WELDMENT W/BUSHING, SCV 24/26
8	241472	1	LINK ATTACHMENT SHAFT, SCV 24/26
9	241476	2	DECK LIFT LINK WELDMENT, SCV 24/26
10	241479	1	DECK LIFT CRANK WELDMENT, SCV 24/26
11	241485	5	POLYURETHANE ROLLER, SCV 24/26
12	711508	1	WSR-FLAT .44X 1.0X.08)
13	711524	8	WSR-WAVE .52 X .87 X .01
14	711583	4	WSR-WAVE .78 X 1.00 X .02
15	711588	4	WSR-FLAT .75X1.00X.025
16	711668	5	CLEVIS PIN, 3/8X1 11-141
17	711669	1	CLEVIS PIN .5 X 2.5
18	711681	1	PIN CLEVIS, 3/8 X 3-1/4 ZP
19	711713	8	RETAINING RING - "E" TYPE EXT .500
20	711808	1	COTTER PIN-HAIR #13
21	712310	8	WSR- FLAT .52 X .87 X .06 PL
22	740822-1	1	LINAK ACTUATOR, 100MM STROKE, 75 W/TERMINALS
23	809148	4	RETAINING RING - "E" TYPE EXT .75
24	809311	4	PIN-COTTER 7/64 DIA X 1
25	833374	3	PIN, HAIRPIN COTTER 3/8



BILL OF MATERIAL - 241251

ITEM	PART NO.	REQ'D	DESCRIPTION
1	241252	1	SPINDLE WELDMENT, SCV 24/26
2	241257	1	FRONT DRIVE W/ BEARING ASS'Y, SCV 24/26
3	241265	1	GEAR RESEARCH CHASSIS DRIVE 10" ASSEMBLY
4	281054	1	CHAIN, STEERING No. 40, 27.5"
5	281254	1	STEERING DISC WMT
6	281268	1	SPROCKET-RC #40, 10 TEETH, 3/4" BORE
7	281285	1	IDLER ASSY, FRONT DRIVE
8	383077	1	BEARING CONE (LM104949)
9	383250	1	GREASE CAP
10	383277	1	KEY WOODRUFF 3/16 X 3/4
11	383364	1	THRUST WASHER
12	710858	4	SCR-SC 3/8-16 X 1.00
13	711546	3	WSR-HELICAL 3/8
14	711588	1	WSR-FLAT .75X1.00X.025
15	711807	1	COTTER PIN .12 X 1.75
16	712113	1	CASTLE NUT
17	713043	3	BLT-HH 3/8-16 X 1 1/4 #5
18	809148	1	RETAINING RING - "E" TYPE EXT .75
19	809247	3	STEERING PLATE SPACER

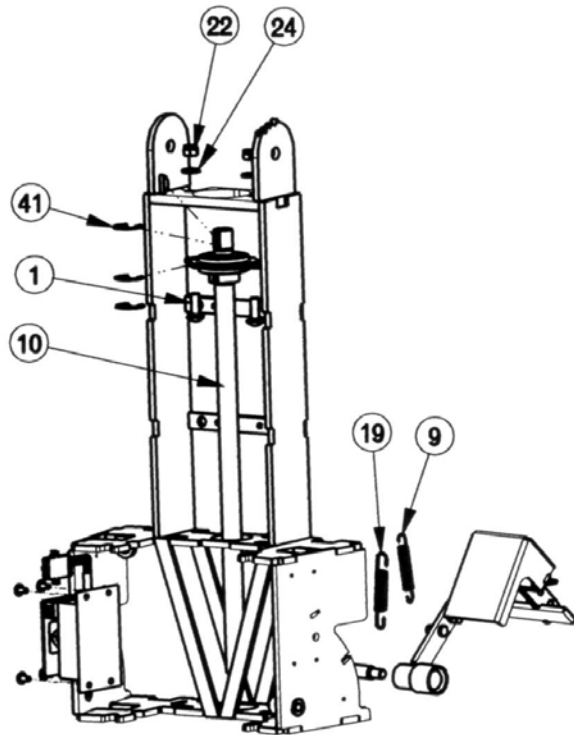
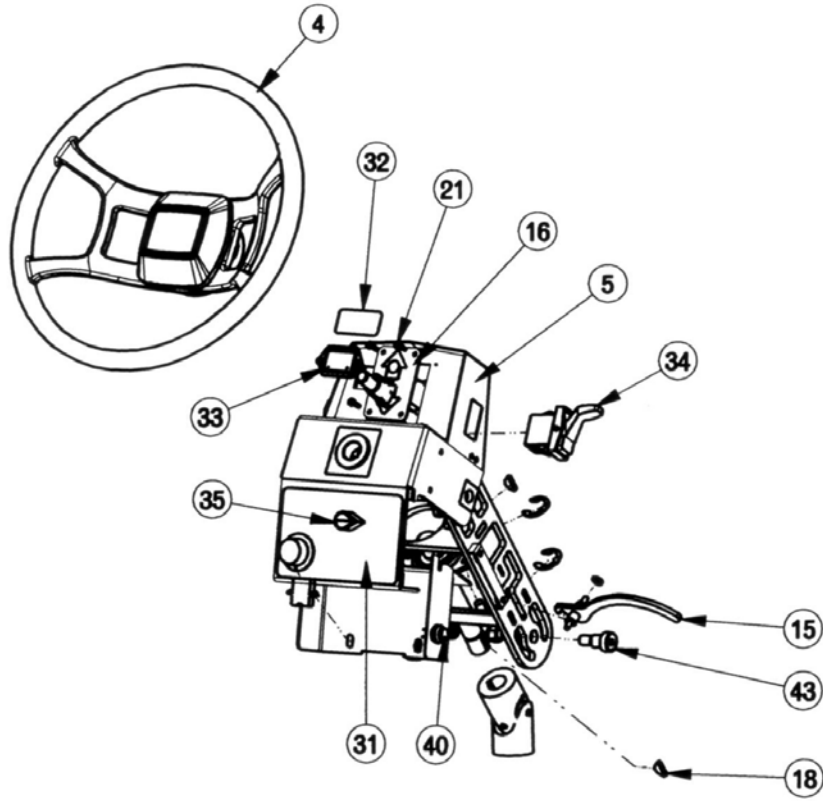
Drive Cable Guide Assembly



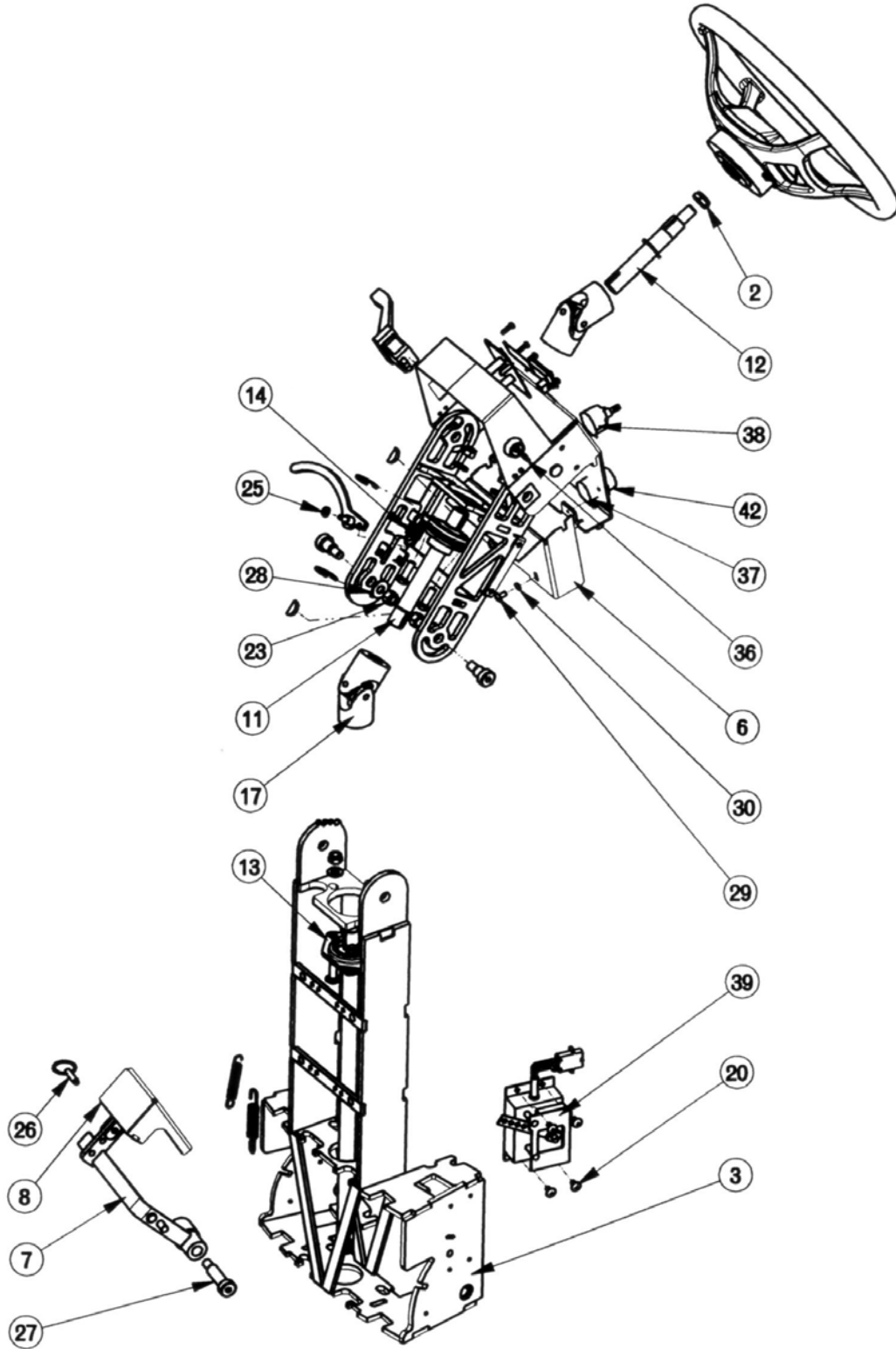
BILL OF MATERIAL - 748208

ITEM	PART NO.	REQ'D	DESCRIPTION
1	241081	1	FIXED WIRE MTG BRKT, SCV 24/26
2	241082	1	MOVING WIRE BRACKET, SCV 24/26
3	748020	1	CONNECTOR, PACKARD 2 COND MALE
4	748207	1	CABLE GUIDE, SCV 24/26
5	748221	1	WIRE ASSY, TRACTION MOTOR SCV 24
6	827666	4	RIVET-POP

Steering Assembly I

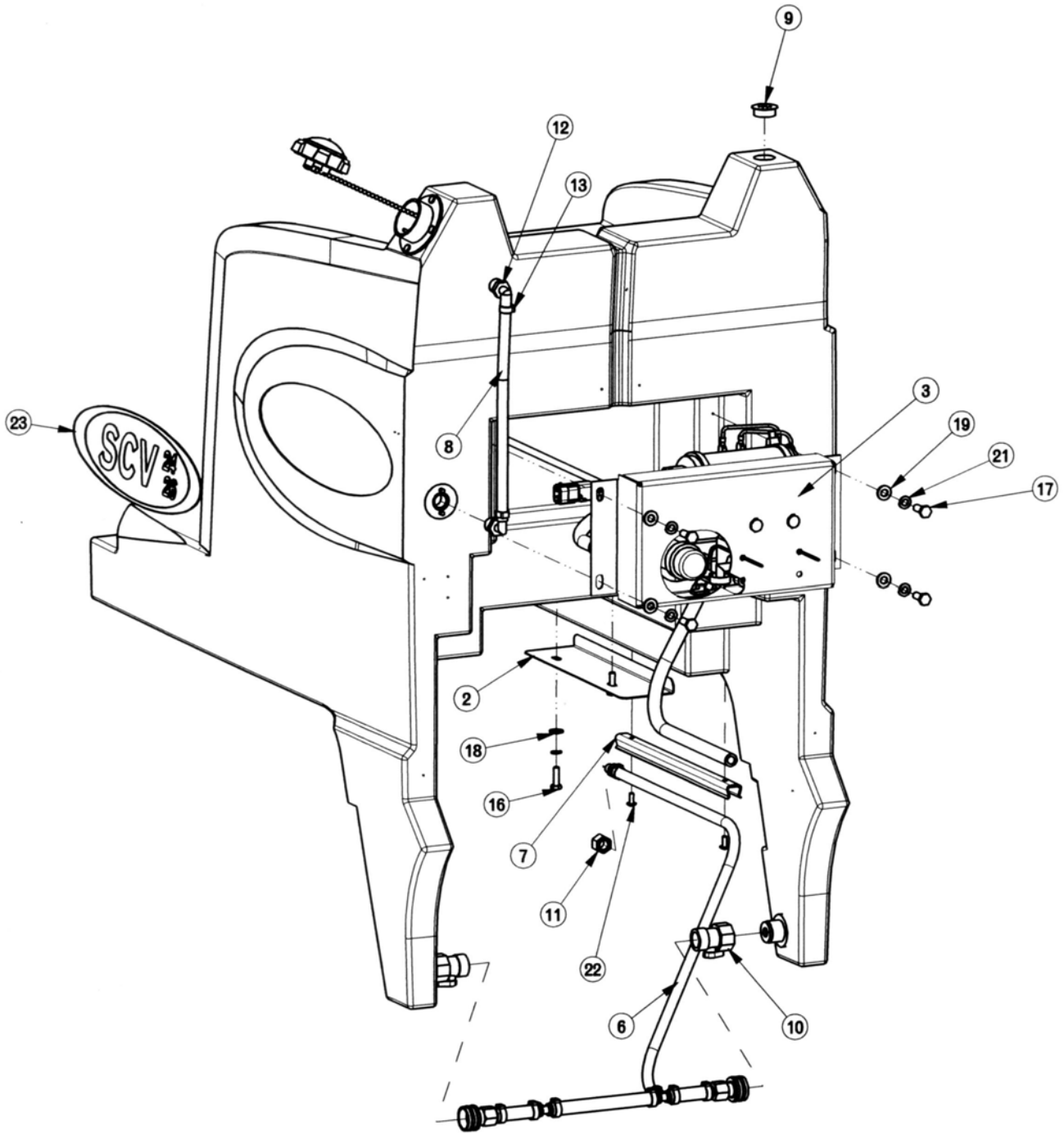


Steering Assembly II

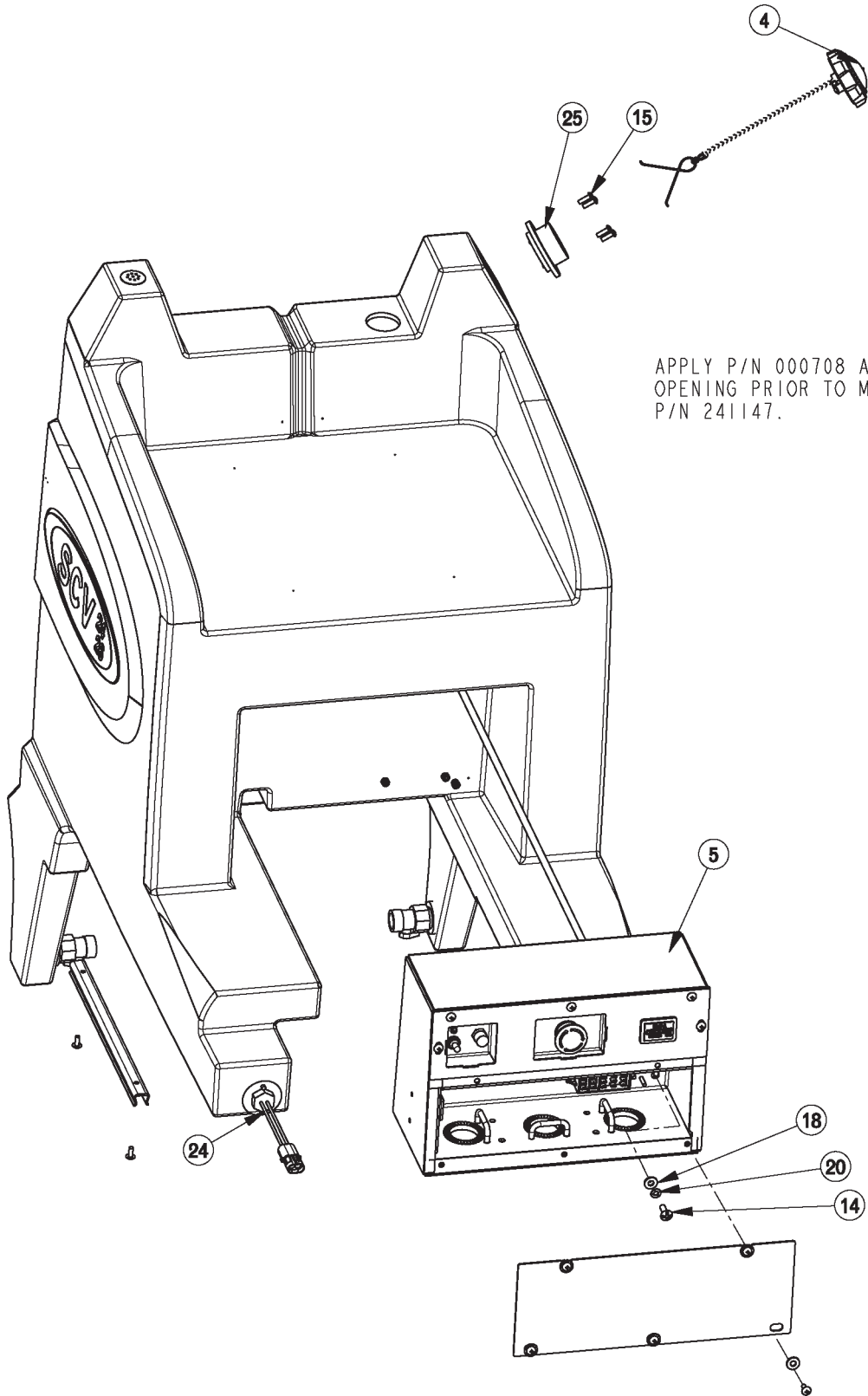


Steering Assembly BOM (See Steering Assembly I & II)

BILL OF MATERIAL - 241301			
ITEM	PART NO.	REQ'D	DESCRIPTION
1	70-516-16	4	BLT-CAR 5/16-18 X 1.00
2	368-816	1	HALF NUT NYLOC 1/2-20
3	241302	1	STEERING WELDMENT, LOWER
4	241311	1	STEERING WHEEL ASSEMBLY, SCV 24/26
5	241320	1	UPPER FIXED BRKT WELDMENT ASSEMBLY, SCV 24/26
6	241327	1	CTRL COVER PLATE ASSY, SCV 24/26
7	241331	1	ACCEL PEDAL WELDMENT, SCV 24/26
8	241336	1	PEDAL GUIDE WELDMENT, SCV 24/26
9	281047	1	SPRING, EXTENSION - 2.75"
10	281328	1	SHAFT,LOWER STEERING
11	281329	1	SHAFT,MIDDLE STEERING
12	281330	1	SHAFT,UPPER STEERING
13	281392	2	BEARING FLANGE ASSEMBLY 3/4 (MCH)
14	282303	1	SPRING - EXTENSION 1.375" F.L.
15	282309	1	ADJUSTMENT LEVER AND PIVOT PIN ASSY
16	320971	1	DIRECTIONAL INDICATOR ASSY
17	383098	2	UNIVERSAL JOINT
18	383277	5	KEY WOODRUFF 3/16 X 3/4
19	430051	1	RETURN SPRING-3.00"
20	710153	4	SCR-MC 10-32X.63 TH ZINC
21	710204	6	SCR-MC 6-32 X .50 ST PL PAN HD
22	711374	4	NUT-NYLOC 5/16-18
23	711380	2	NUT-NYLOC 3/8-16 NUT
24	711506	4	WSR-FLT .344 X .690 X .062 STL ZINC
25	711521	2	WSR-WAVE .21 X .44 X .02
26	711682	1	PIN-QUICK RELEASE, 1/4" DIA., .500 UL
27	712102	1	BLT- SHLDR 1/2 X 1-1/2
28	712301	2	WSR-FLAT .87 X .38 X .06
29	712540	2	SCR-MC TR HD 10-24 X .37 SS
30	712757	2	WSR - HELICAL #10 SS
31	715435	1	DECAL, MODE SELECTOR SCV 24/26
32	715505	1	DECAL, SOLUTION TANK INDICATOR
33	747011	1	BATTERY GAUGE, TRUCHARGE
34	747015	1	SWITCH, SPDT DIRECTION ES28322
35	747020	1	KNOB-MODE SELECTOR
36	747024	1	KEYSWITCH, SPST ES2832 SOLDER
37	747025	1	POTENTIOMETER ASSY WATER FLOW
38	747027	1	SWITCH ASSY, MODE SELECTOR
39	748013-1	1	POTENTIOMETER BOX ASSEMBLY
40	748047	1	HORN SWITCH, SCV 36V
41	809148	6	RETAINING RING - "E" TYPE EXT .75
42	809874	1	KNOB, SPEED CONTROL
43	712099PLT	2	BLT- SHLDR 1/2 X 5/8



Solution Tank Assembly II

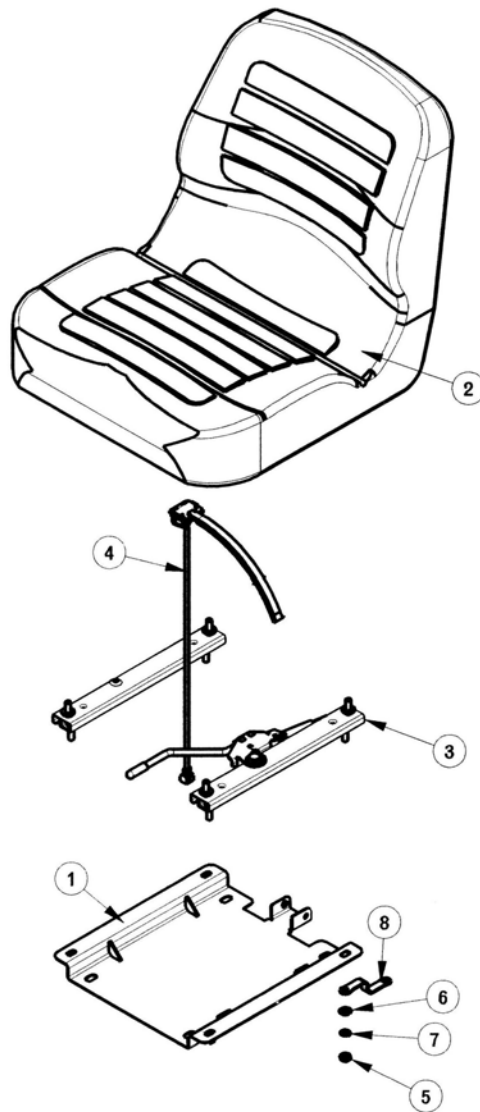


APPLY P/N 000708 AROUND
OPENING PRIOR TO MOUNTING
P/N 241147.

Solution Tank Assembly BOM (See Sol. Tank Assy. I & II)

BILL OF MATERIAL - 241012			
ITEM	PART NO.	REQ'D	DESCRIPTION
1	241002	1	SOLUTION TANK, SCV24/26
2	241041	1	SCV 24, WIRE BUNDLE, COVER PLATE
3	241098	1	PUMP SUB-ASSEMBLY w/OAW, SCV 24/26
4	241146	1	UNVENTED PLASTIC CAP w/LANYARD, SCV 24/26
5	241401	1	MAIN ELECT BOX ASSY, SCV 24/26
6	241722	1	SOLUTION TANK HOSE ASSY, SCV 24/26
7	260149	1	U CHANNEL 12"
8	260340	1	SOLUTION TANK SIGHT LEVEL TUBE, SCV 24/26
9	281371	1	VENT PLUG
10	281427	2	#35 SHUTOFF, BLACK, ZERO PRS
11	430114	1	1/4" FPT PLASTIC CAP
12	450040	2	FITTING 90 3/8 MPT X 3/8 BARB
13	450092	2	CRIMP CLAMP 27/64" TO 17/32"
14	710180	4	SCR-MC 1/4-20 X .75 ZINC
15	711161	4	SCR-HI/LO 10 X 3/4 STL BLK ZINC
16	711206	2	BLT-HH 1/4-20 X .87 ST PL
17	711229	4	BLT-HH 5/16-18 x .875
18	711505	6	WSR-FLAT 1/4
19	711506	4	WSR-FLT .344 X .690 X .062 STL ZINC
20	711544	6	WSR-HELICAL 1/4
21	711545	4	WSR-HELICAL 5/16
22	712822	2	SCR-MC TR HD 10-24 X .50 SS
23	715363	2	DECAL, SCV 24/26
24	742708-4	1	FLOAT SWITCH W/WEATHER PACK
25	713508MCH	1	SPINWELD # 20D MACHINED

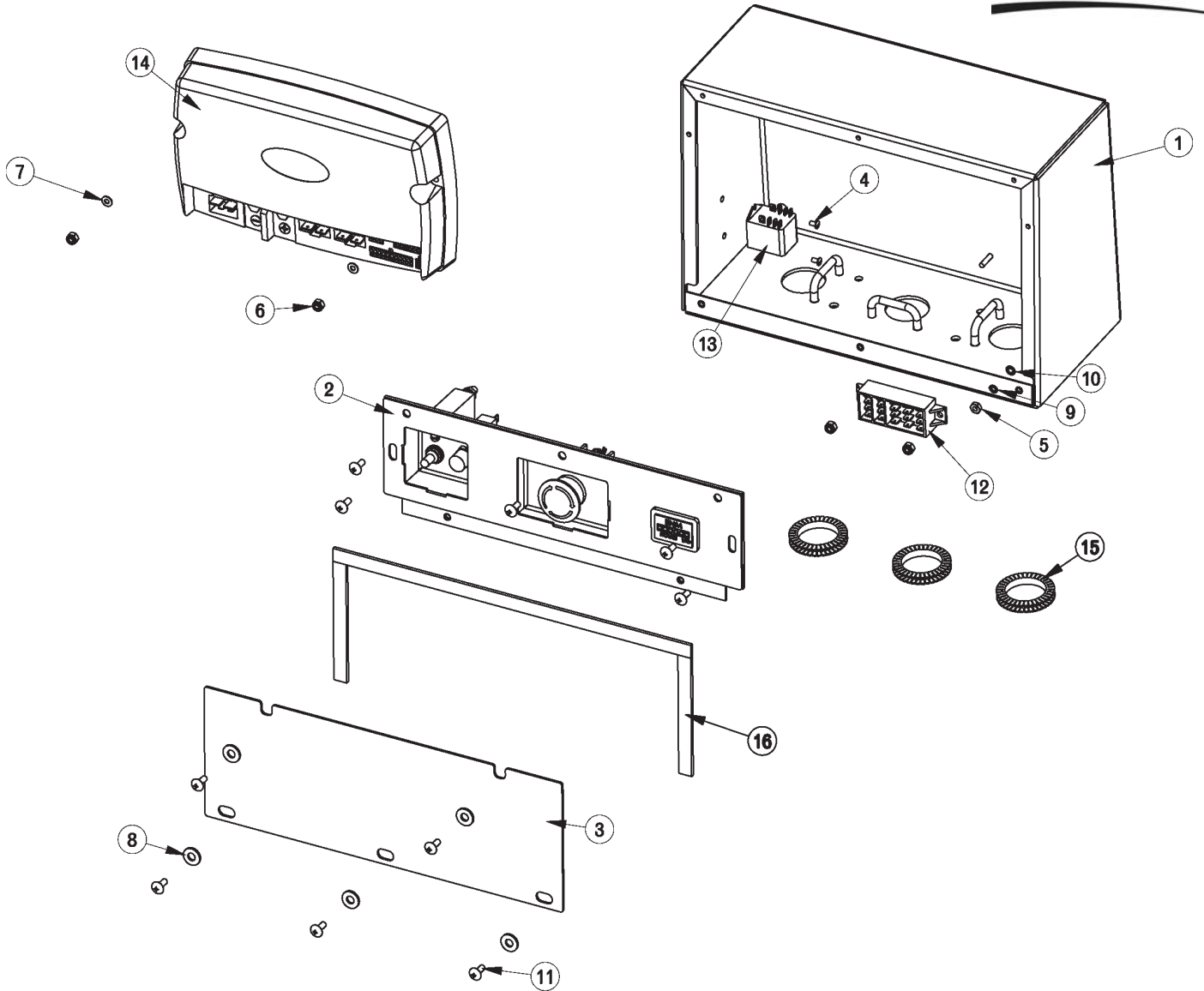
Seat Assembly



BILL OF MATERIAL - 241365

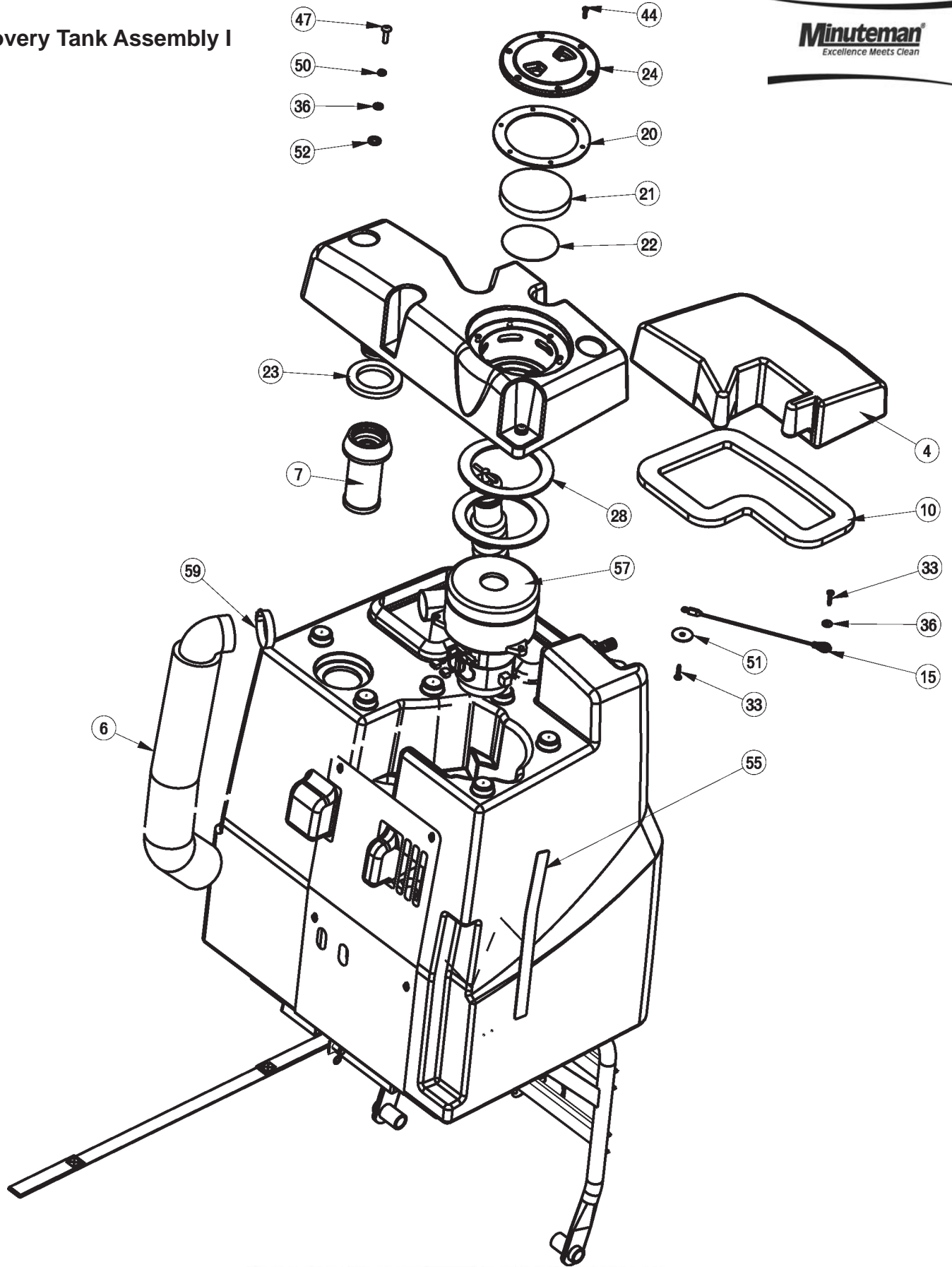
ITEM	PART NO.	REQ'D	DESCRIPTION
1	241376	1	SEAT BRACKET WMT, SCV 24/26
2	281085	1	ASS'Y SEAT, SUPER SUBURBAN
3	281086	1	SLIDE ASS'Y KIT
4	281087-2	1	SEAT SWITCH ASSEMBLY, SCV 24/26
5	711319	4	5/16-18 HEX NUT
6	711506	4	WSR-FLT .344 X .690 X .062 STL ZINC
7	711545	4	WSR-HELICAL 5/16
8	748255	1	SEAT GROUND STRAP, SCV 24/26

Electrical Panel Assembly

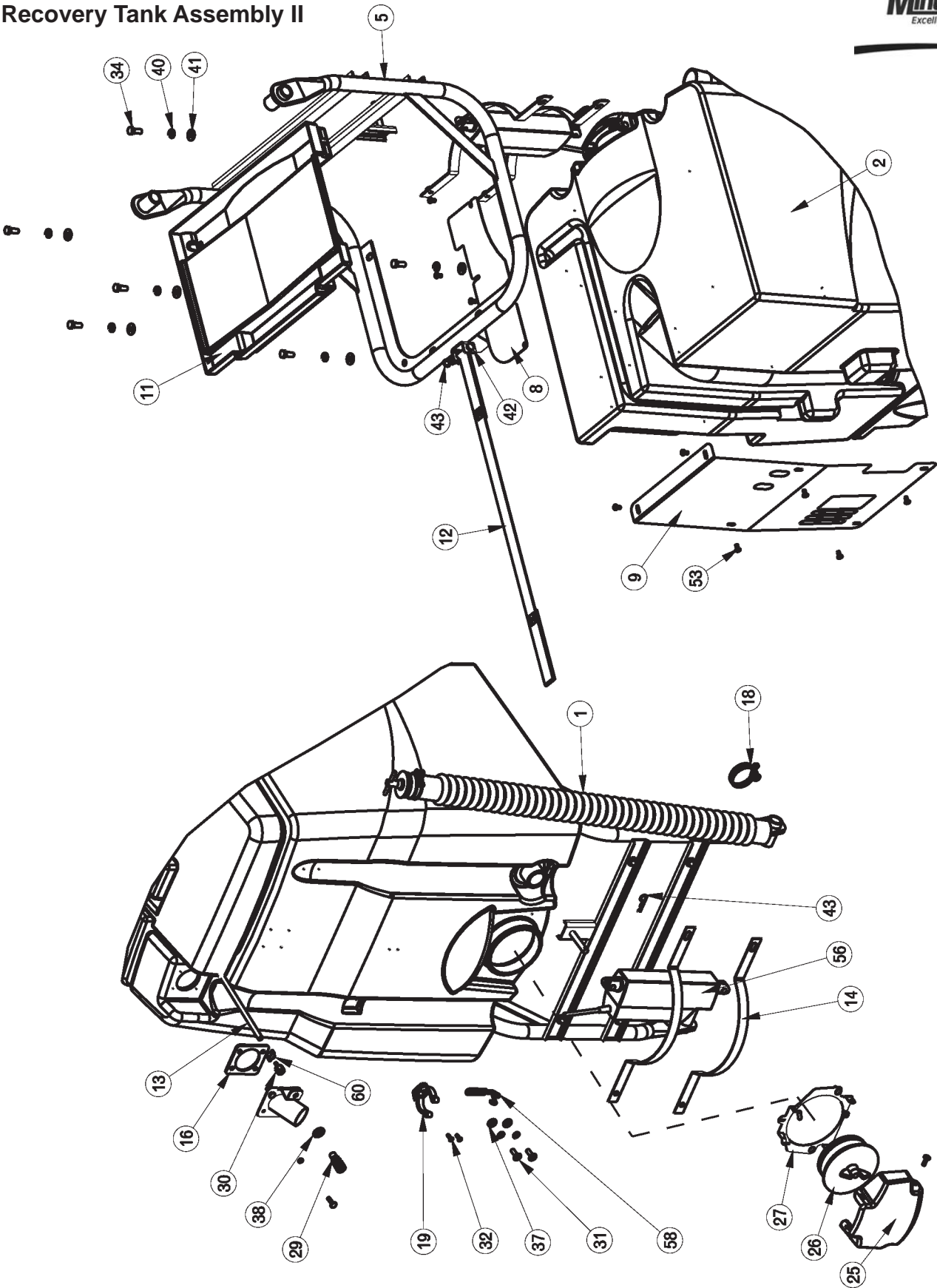


BILL OF MATERIAL - 241401			
ITEM	PART NO.	REQ'D	DESCRIPTION
1	241402	1	ELECTRICAL BOX WDMNT, SCV 24/26
2	241404	1	E-STOP PANEL ASSEMBLY, SCV 24/26
3	241409	1	ELECTRICAL PANEL DOOR, SCV 24/26
4	710202	2	SCR-MC 6-32 X .25 ST PL PAN HD
5	711304	1	NUT-HEX 8-32 ST PL
6	711372	4	NUT-NYLOC 8-32 STL ZINC
7	711502	2	WSR-FLT .170 x.38 x.032 STL ZINC
8	711505	5	WSR-FLAT 1/4
9	711542	1	WSR-HELICAL #8
10	711552	1	WSR - INTERNAL LOCK #8
11	712822	10	SCR-MC TR HD 10-24 X .50 SS
12	744005	1	TERMINAL BLOCK EAGLE 3
13	748204	1	RELAY, 36VDC DPDT
14	748206	1	CONTROLLER,TRIO PLUS SCV2426
15	281449	1.125	SERRATED GROMMET STRIP
16	830557	2.1	DORTITE 1/2" RM IF

Recovery Tank Assembly I



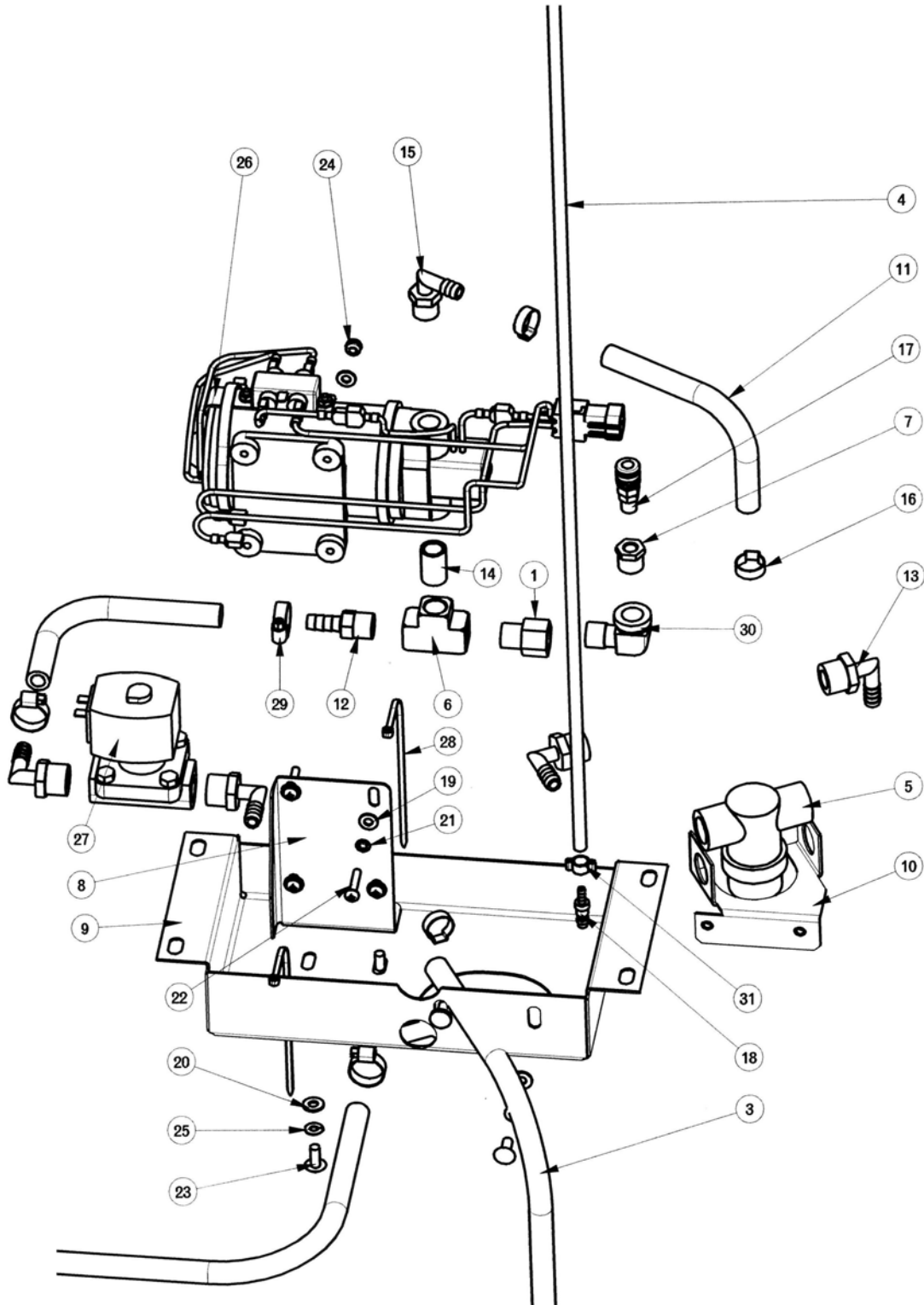
Recovery Tank Assembly II



Recovery Tank BOM (See Recovery Tank Assembly I & II)



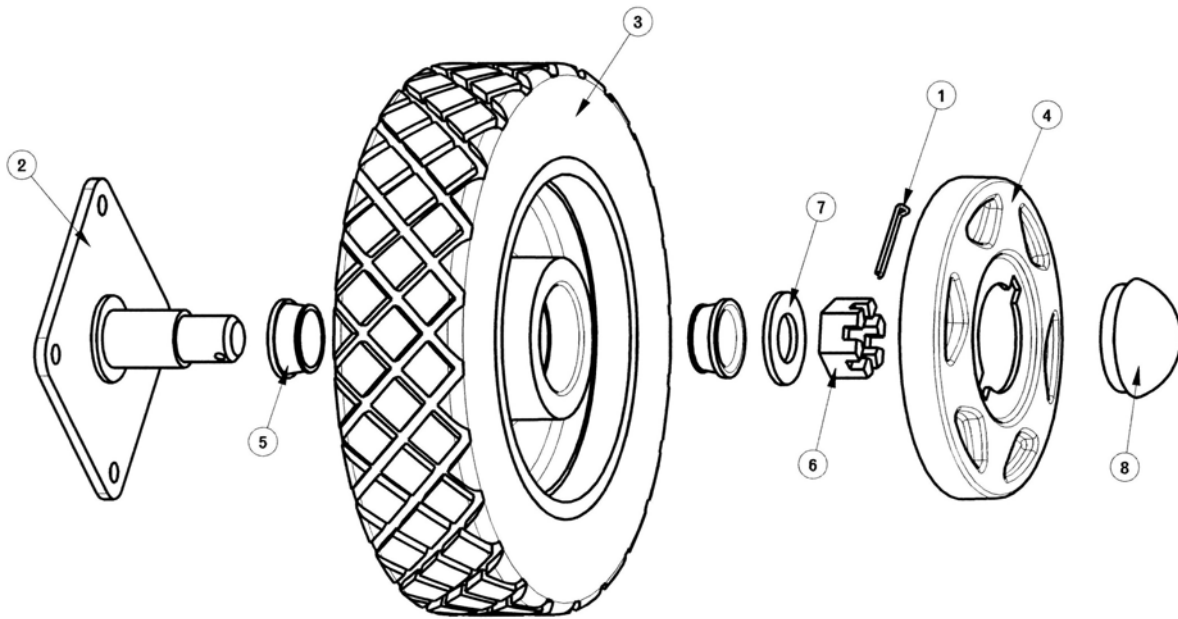
BILL OF MATERIAL - 241013							
ITEM	PART NO.	REQ'D	DESCRIPTION	ITEM	PART NO.	REQ'D	DESCRIPTION
1	200289	1	DUMP HOSE ASM	31	710180	2	SCR-MC TR HD 1/4-20x.75 STL ZINC
2	241003	1	RECOVERY TANK, SCV 24/26	32	710530	2	SCR-MC FL HD 8-32 X .50 BRS
3	241006	1	FIXED LID, SCV 24/26	33	711107	2	SCR-ST-A #10 X 1.00 PL
4	241007	1	LID, RECOVERY TANK REMOVABLE	34	711228	6	BLT-HH 5/16-18 X .75 ST PL
5	241037	1	RECOVERY TANK FRAME WELDMENT, SCV 24/26	35	711420	4	NUT- HEX JAM 5/16-18 ST PL
6	241049	1	VAC MOTOR MUFFLER, SCV 24/26	36	711504	7	WSR-FLAT 1/4 ID SS
7	241060	1	SCREENED FLOAT	37	711505	2	WSR-FLAT 1/4
8	241076	1	VAC WIRE COVER, SCV 24/26	38	711515	1	WSR-FLAT .406 X .812 X .0625
9	241099	1	EXHAUST/VAC WIRE COVER, SCV 24/26	39	711544	2	WSR-HELICAL 1/4
10	241193	1	REMOVABLE LID GASKET, SCV 24/26	40	711545	6	WSR-HELICAL 5/16
11	241420	1	EXHAUST DIVERTER, SCV 24/26	41	711575	6	WSR-FLT .31x.75x.06ST
12	241433	1	RECOVERY TANK SAFETY STRAP, SCV 24/26	42	711678	1	CLEVIS PIN 3/8 X 2-1/4
13	241435	1	REC. TANK OAW SOLUTION FEED HOSE, SCV 24/26	43	711808	2	COTTER PIN-HAIR #13
14	241519	2	ACTUATOR PROTECT BKT	44	712516	6	SCR-BHCS #8-32 x .62 SS
15	241704	1	REMOVABLE COVER LANYARD ASSY, SCV 24/26	45	712536	2	SCR-MC 10-24 X .62 TH SS
16	241803	1	INLET WELDMENT GASKET, SCV 24/26	46	712537	4	10-24 X .75 SS TRUSS HD SCR
17	241805	1	REC TANK VAC INLET PIPE WELDMENT (OAW), SCV 24/26	47	712541	6	SCR-MC 1/4-20 X 1.00 TH SS
18	260203	1	WIRE GRIP HOSE CLAMP	48	712638	2	NUT, HEX 10-24 SS NYLOC
19	260579	1	TOOL CLIP, 1.5" HOSE	49	712757	4	WSR - HELICAL #10 SS
20	281018	1	GASKET, NEO 6.00 X 4.50 X .125	50	712758	6	WSR-HELICAL 1/4 SS
21	281055	1	VAC MOTOR FILTER	51	712761	1	WSR-FLAT .28 X 1.25 X .059SS
22	281056	1	VAC MOTOR INLET SCREEN	52	712767	6	FLAT WASHER .406 ID X .75 OD X .
23	281073	1	INLET GASKET	53	712810	9	SCR-MC 10-24 X .37 ST PL
24	281423	1	FILL CAP W/CHAIN ASSY 4.00	54	712822	3	SCR-MC TR HD 10-24 X .50 SS
25	320835	1	ES2832 DUMP CAP COVER	55	715717	1	DECAL, OVERFILL SIGHT GAUGE, SCV 24/26
26	320838	1	STOPPER PLUG ASM - 4"	56	740821-1	1	ACTUATOR ASSEMBLY, LINAK
27	320839	1	DUMP COVER SUPPORT RING	57	742773	1	VACUUM ASSEMBLY, SCV
28	380035	2	MOTOR GASKET	58	760286	1	HOOK, WIRE FORMED
29	450221	1	Q.C. COUPLING (FEMALE)	59	760859	1	CLAMP, HOSE
30	450223	1	FITTING BRASS 1/8 FPT - 1/8 BARB	60	830082	1	HOSE CLAMP 3/8



Pump Assembly BOM

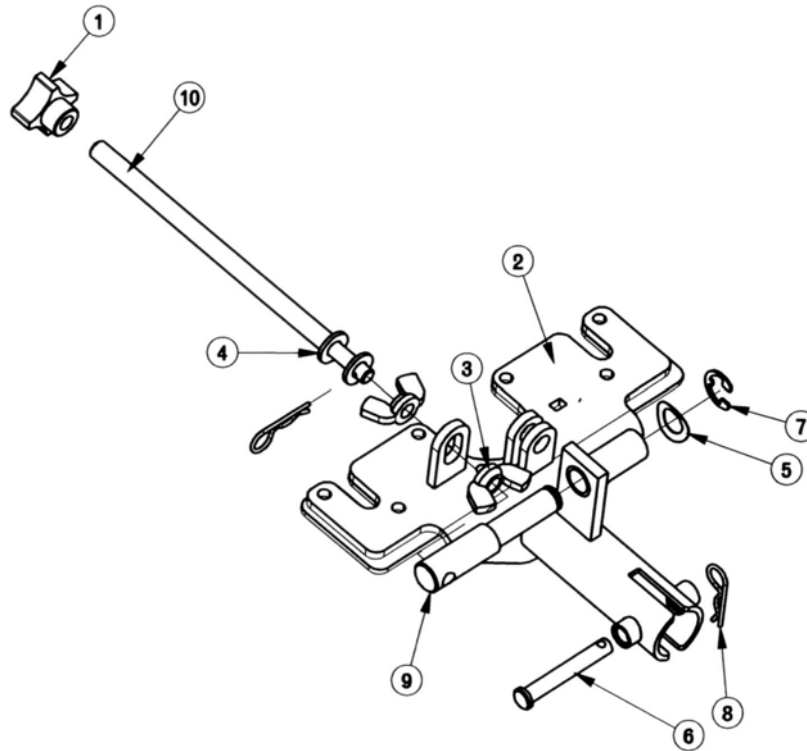
BILL OF MATERIAL - 241098			
ITEM	PART NO.	REQ'D	DESCRIPTION
1	210409	1	FITTING ADAPTOR 3/8MPTx38/FPT BR
2	241096	1	HOSE 3/8 x 45" WIRE REINFORCED, SCV 24/26
3	241097	1	HOSE 3/8 x 31 WIRE REINFORCED, SCV 24/26
4	241430	1	OAW SOLUTION FEED HOSE, SCV 24/26
5	281089	1	FILTER, IN-LINE
6	281090	1	FITTING BRASS 3/8" FPT TEE
7	281091	1	FITTING 3/8MPTx1/8 FPT REDUCER
8	281368	1	PUMP MOUNT PLATE
9	281369	1	PUMP SUPPORT PLATE
10	281388	1	PUMP MTG PLATE
11	320254	2	HOSE 3/8 x 9.00" WIRE REINFORCED
12	342430	1	FITTING BRASS 3/8MPT X 3/8BARB
13	383327	4	ELBOW 1/2 MPT X 3/8 BARB
14	383332	1	FITTING BRASS 3/8 NIPPLE
15	450040	1	FITTING 90 3/8 MPT X 3/8 BARB
16	450076	3	CRIMP CLAMP SS 185R
17	450221	1	Q.C. COUPLING (FEMALE)
18	450279	2	Q.C. COUPLING NIPPLE (MALE X 1/8 BARB)
19	711503	8	WSR, FLAT#10
20	711504	4	WSR-FLAT 1/4 ID SS
21	711553	4	WSR- INTERNAL LOCK #10
22	712531	4	SCR-MC 10-24 X 1.00 SS
23	712565	4	SCR-MC 1/4-20X.63 SS TR HD
24	712638	4	NUT, HEX 10-24 SS NYLOC
25	712758	4	WSR-HELICAL 1/4 SS
26	742709-2	1	PUMP ASSEMBLY-SCV
27	742718-1	1	SOLENOID VALVE 36V
28	828062	2	CABLE TIE .05 x .14 x 8"
29	829129	3	HOSE CLAMP MICRO-SEAL
30	830062	1	FITTING 90 STREET ELBOW 3/8x3/8
31	830082	2	HOSE CLAMP 3/8

Rear Axle Assembly



BILL OF MATERIAL - 241201			
ITEM	PART NO.	REQ'D	DESCRIPTION
1	380-632-20	1	3/16 COTTER PIN
2	241202	1	REAR AXLE WELDMENT, SCV 24/26
3	241210	1	REAR WHEEL ASSY
4	241212	1	REAR WHEEL HUB CAP, SCV 24/26
5	383194	2	BEARING CONE
6	711450	1	NUT-SLOTTED, 1-14 UNS
7	711514	1	WSR-FT 1.0 ID X 2.0 OD
8	383241PTD	1	GREASE CAP WHEEL-PAINTED

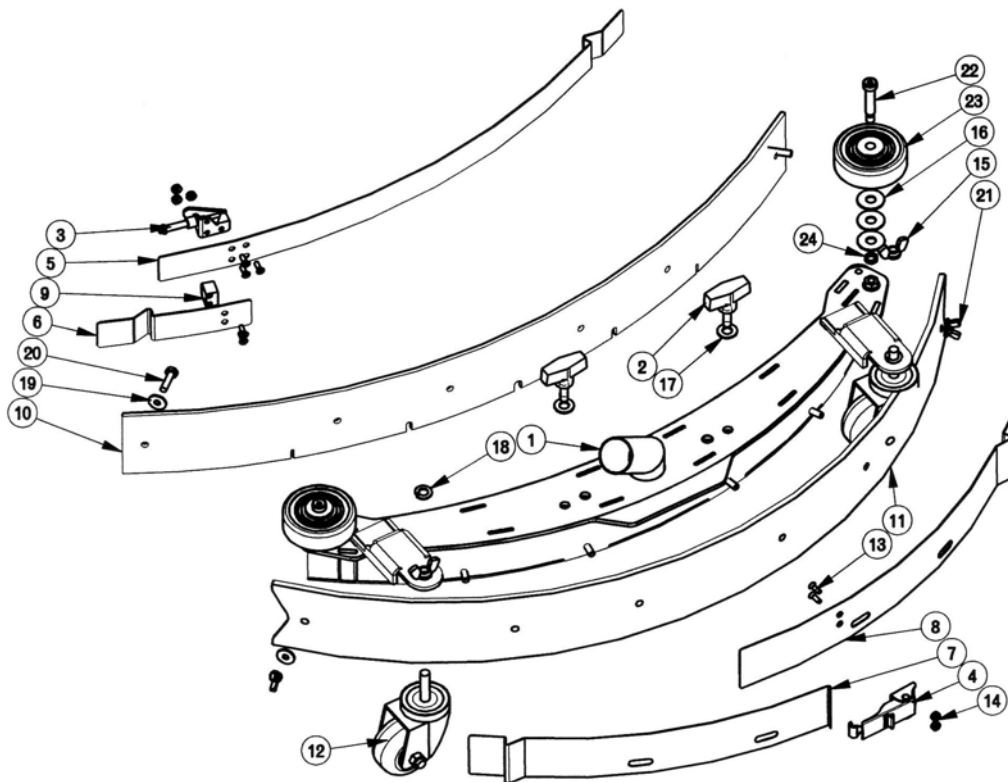
Squeegee Mechanism Assembly



BILL OF MATERIAL -241730

ITEM	PART NO.	REQ'D	DESCRIPTION
1	241004	1	KNOB, 3/8-16 FOUR PRONG.
2	241751	1	REAR SQUEEGEE MOUNT PLATE W MT, SCV 24/26
3	711367	2	NUT-W ING 3/8-16 ST PL
4	711506	2	W SR-FLT .344 X .690 X .062 STL ZINC
5	711524	1	W SR-W AVE .52 X .87 X .01
6	711671	1	CLEVIS PIN .31X2.13 11-10
7	711713	1	RETAINING RING -"E" TYPE EXT .500
8	711808	2	COTTER PIN-HAIR #13
9	762005	1	ADJUSTING PIN, THREADED
10	762006	1	THREADED ROD, 3/8-16 X 7.5" LG

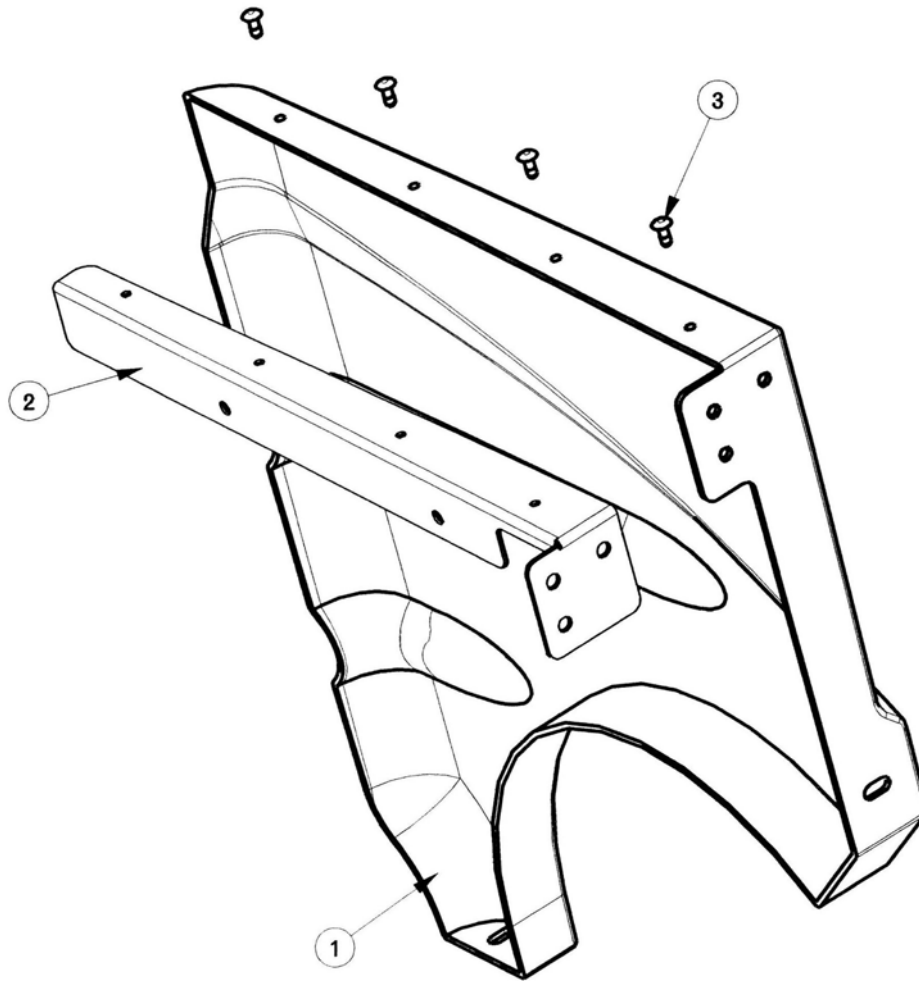
Rear Squeegee Assembly



BILL OF MATERIAL - 241740

ITEM	PART NO.	REQ'D	DESCRIPTION
1	241721	1	SQUEEGEE WMT ASS'Y, SCV 24/26
2	241745	2	WING BOLT 3/8-16 X 1.00
3	281074	1	SQUEEGEE TOGGLE CLAMP, 2800
4	281075	1	SQUEEGEE LATCH, 2800
5	281732	1	STRAP - FRONT CLAMP
6	281734	1	STRAP - FRONT STOP
7	281736	1	STRAP - REAR CATCH
8	281738	1	STRAP - REAR LATCH
9	281740	1	STOP BAR
10	281763	1	PB FRONT BLADE, SQUEE GUM RUBBER
11	281764	1	PB REAR BLADE, SQUEEGEE GUM RUBBER
12	430325	2	CASTER 3/8"-16 X 1.50"
13	710530	7	SCR-MC FL HD 8-32 X .50 BRS
14	711026	5	NUT, HEX 8-32 NYLOC SS
15	711367	2	NUT- WING 3/8-16 ST PL
16	711507	6	WSR-FLAT .37 X 1.12 X .06
17	711515	2	WSR-FLAT .406 X .812 X .0625
18	711546	2	WSR-HELICAL 3/8
19	711550	4	WSR NYLON .25 ID X .75 OD
20	711560	2	SCREW-HH 1/4-20X1.00 NYLON
21	711563	2	NUT- WING 1/4-20 NYLON
22	712091	2	SHOULDER BLT 3/8 X 1.50
23	808829	2	WHEEL, TRUCK
24	832015	2	SPACER .38 X .50 X .140

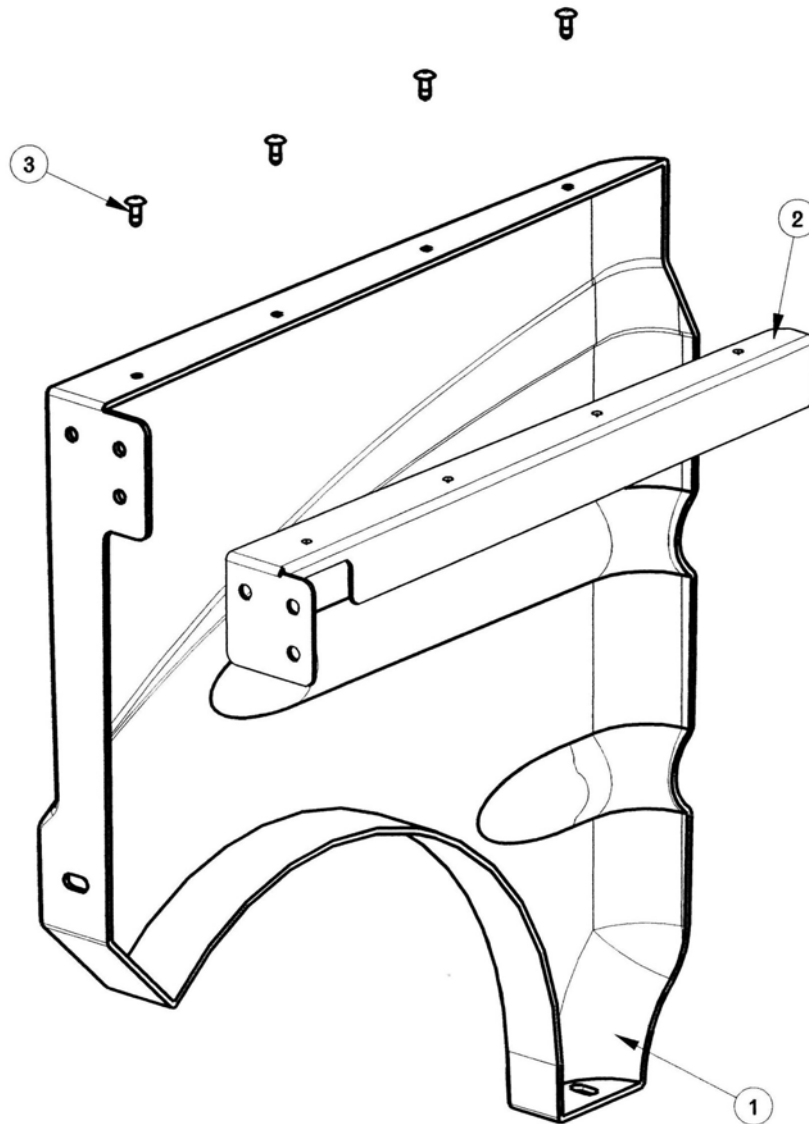
Battery Panel Assembly (Left Hand Side)



BILL OF MATERIAL -241045

ITEM	PART NO.	REQ'D	DESCRIPTION
1	241021	1	LH BATTERY PANEL, SCV 24/26
2	241043	1	LEFT SIDE PANEL SUPPORT BRKT, SCV 24/26
3	711923	4	POP RIVET 3/16 "

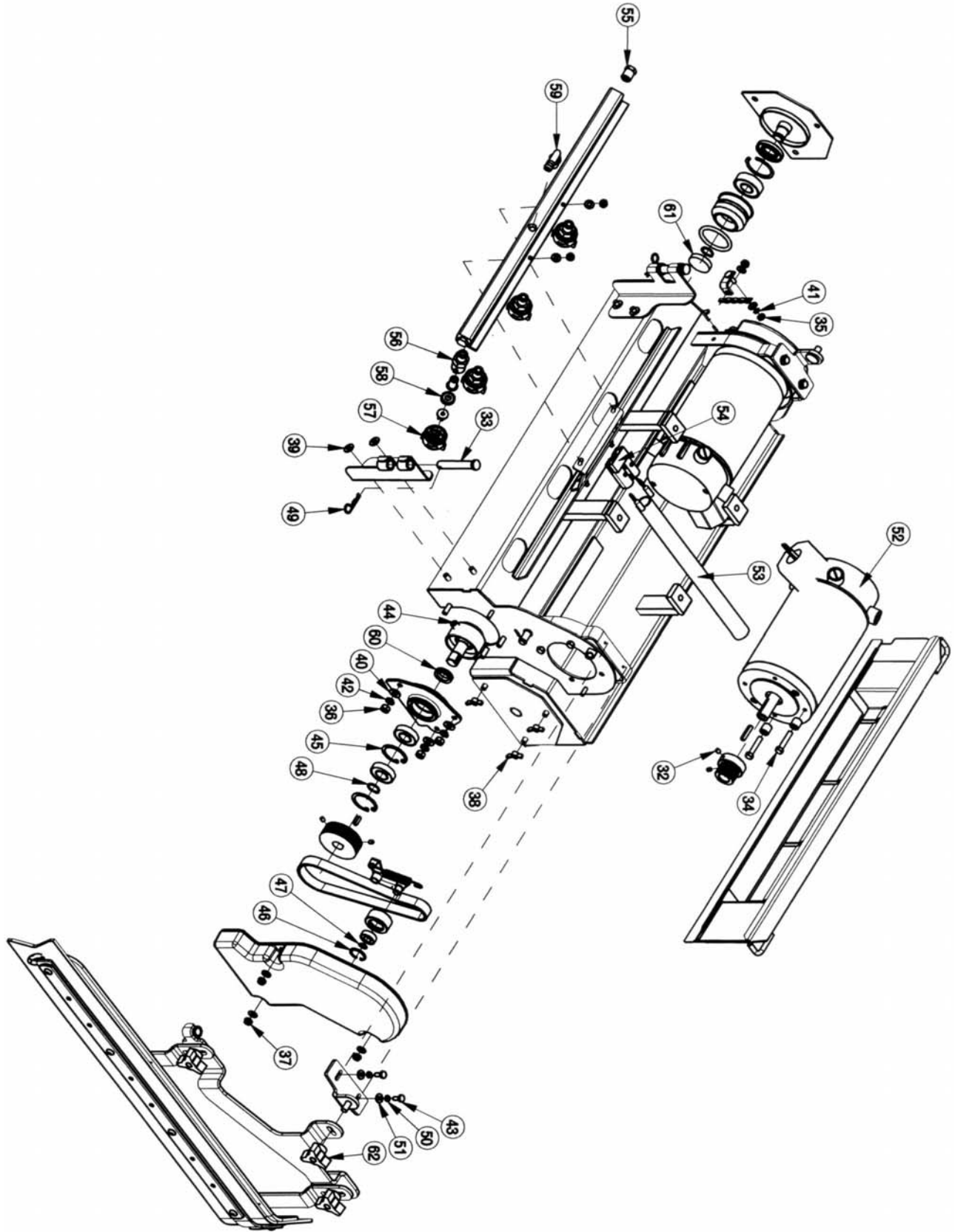
Battery Panel Assembly (Right Hand Side)



BILL OF MATERIAL -241046

ITEM	PART NO.	REQ'D	DESCRIPTION
1	241022	1	RH BATTERY PANEL, SCV 24/26
2	241044	1	RIGHT SIDE PANEL SUPPORT BRKT, SCV 24/26
3	711923	4	POP RIVET 3/16"

24" Cylindrical Scrub Deck (Items 32-62)

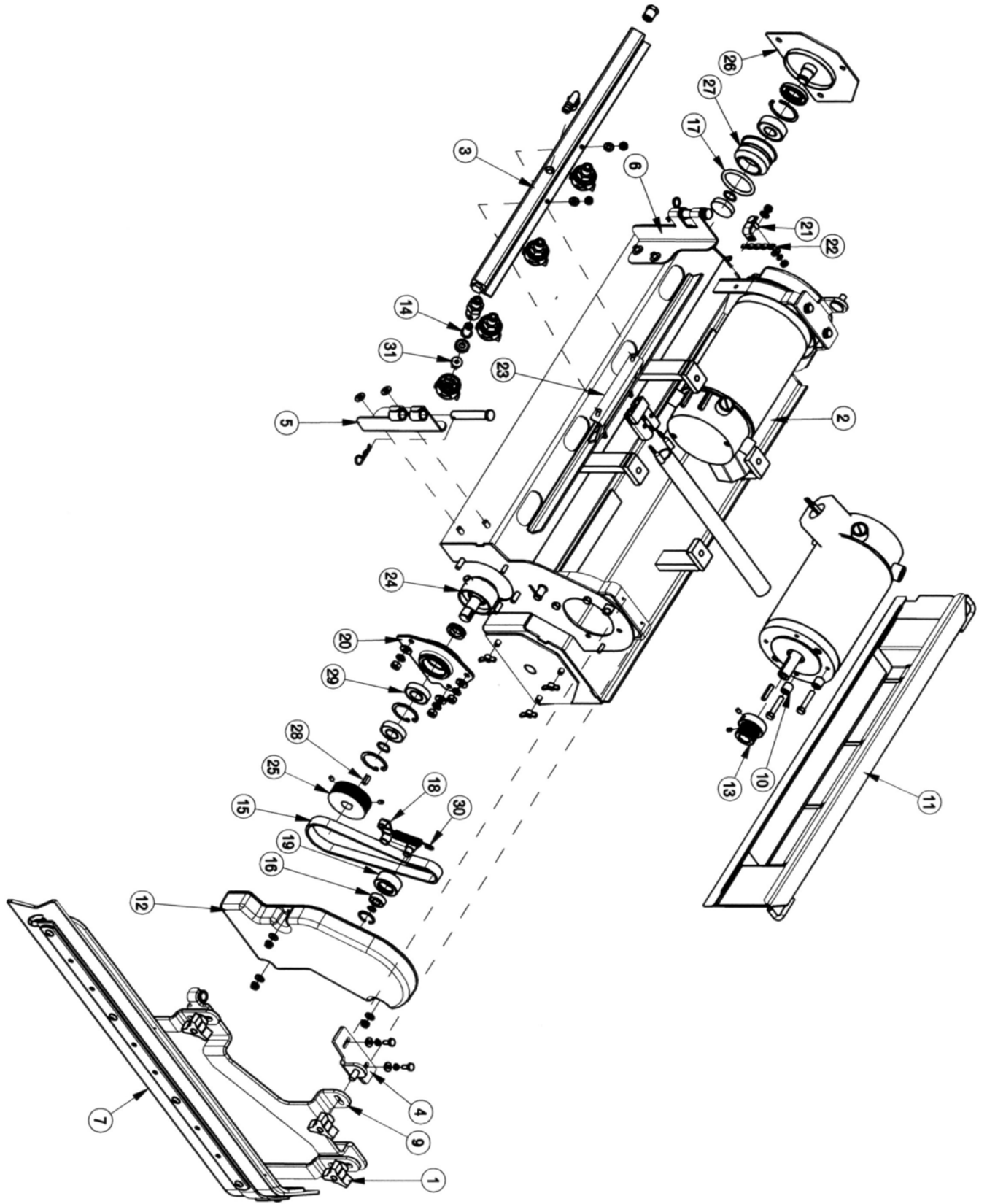


24" Cylindrical Scrub Deck BOM (See Assembly I & II)

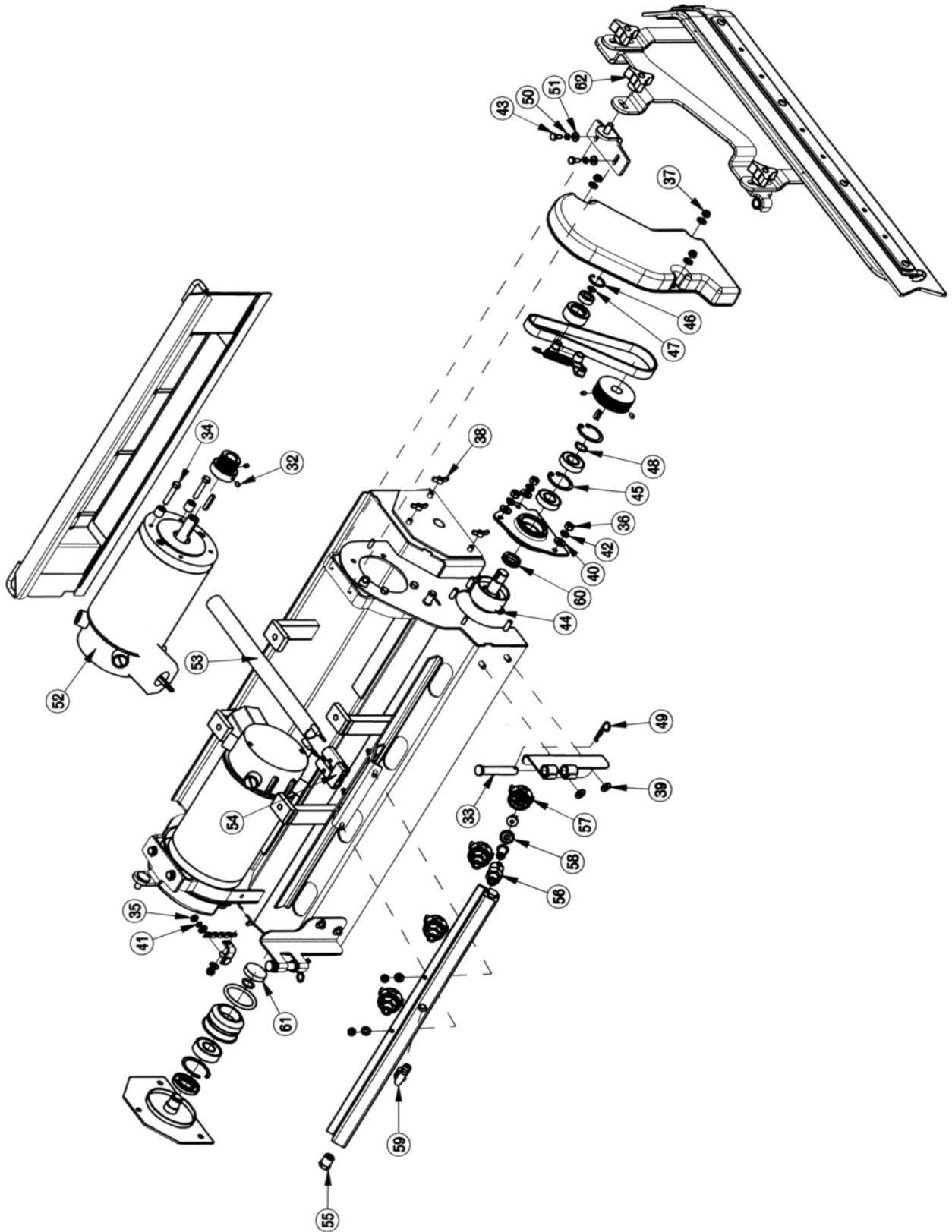


BILL OF MATERIAL - 241702						
ITEM	PART NO.	REQ'D	DESCRIPTION	ITEM PART NO.	REQ'D	DESCRIPTION
1	210118	4	KNOB-3 SIDED 5/16 NYLOC	32	711003	SCR-SK 10-32 x .25
2	241502	1	CYLINDRICAL SCRUBDECK WELDMENT, SCV 24	33	711119	CLEVIS PIN 7/16 X 2-5/8
3	241512	1	SPRAY BAR, CYL SCRUBDECK, SCV 24/26	34	711210	BLT-HH 1/4-20 X 1.25 STPL
4	241542	2	UPPER SQUEEGEE MTG BRKT	35	711310	NUT, HEX 10-32 ST PL
5	241544	1	HINGE BRKT WLDMNT RH, SCV2426	36	711316	NUT-HEX 1/4-20 ST PL
6	241546	1	HINGE BRKT WLDMNT LH, SCV2426	37	711350	NUT NYLOC 10-32
7	241552	1	LOWER SIDE SQUEEGEE ASSY LH, SCV 24/26	38	711389	NUT-WING 1/4-20 STL ZINC
8	241553	1	LOWER SIDE SQUEEGEE ASSY RH, SCV 24216	39	711504	WSR-FLAT 1/4 ID SS
9	241554	1	UPPER SQUEE BRKT WMT LH, SCV 24/26	40	711505	WSR-FLAT 1/4
10	241598	8	MOTOR SPACER CYL DECK, SCV 24/26	41	711543	WSR - HELICAL #10
11	241901	1	DEBRIS BOX WMT, CYL SCRUBDECK 24"	42	711544	WSR-HELICAL 1/4
12	281023	2	BELT COVER, CYLINDRICAL SCRUBDECK	43	711623	SCR-MC IND. HH 10-24 X .50 STPL
13	281036	2	OFFSET PULLEY POLY V	44	711676	ROLL PIN, 3/8 x 3/4
14	281041	4	CHECK VALVE	45	711701	RETAINING RING, INT 1.37
15	281053	2	J BELT (POLY V) 18"	46	711704	INTERNAL RETAINING RING N5000-86 .875 DIA.
16	281058	2	BEARING 3/8" RADIAL	47	711724	3/8" RETAINING RING, EXTERNAL
17	281519	2	O-RING 1.62 X 2.00 X .188	48	711725	5/8" RETAINING RING, EXTERNAL
18	281544	2	TENSIONER ARM WELDMT	49	711808	COTTER PIN-HAIR #13
19	281548	2	BELT IDLER	50	712757	WSR - HELICAL #10 SS
20	281550	2	BEARING HOUSING, CYL SCRUBDECK	51	712764	WSR #10 SS
21	281557	1	DRAG CHAIN BRKT, CYL. SCRUBDECK	52	748102	MOTOR 3/4 HP, 36V, 1800RPM
22	281558	1	DRAG CHAIN, CYL. SCRUBDECK	53	748141	CABLE WRAP, 11"
23	281606	1	SPRAY HEAD MTG BRKT	54	748215	CIRCUIT BRKR - SB50 GRAY HOUSING ONLY
24	281675	2	DRIVE HUB, CYL SCRUBDECK	55	829619	END PLUG
25	281676	2	DRIVEN PULLEY, CYL SCRUBDECK	56	833140	BODY INLET CONNECTOR
26	281681	2	IDLE SHAFT WMT, CYL DECK	57	833141	CAP
27	281683	2	IDLE HUB ASSY	58	833142	GASKET CAP
28	361252	2	KEY, WOODRUFF, 3/16 SQ X .5	59	833325	FITTING NYLON 90 1/4MPT X 3/8HB
29	383558	4	BEARING, RADIAL 5/8" R10	60	833605	VRING SEAL
30	430051	2	RETURN SPRING-3.00"	61	833611	END CAP
31	450122	2	UNIJET SPRAY TIP 6503	62	210118Y	KNOB 5/16" THREAD, YELLOW

26" Scrub Deck Assembly I (Items 1-31)



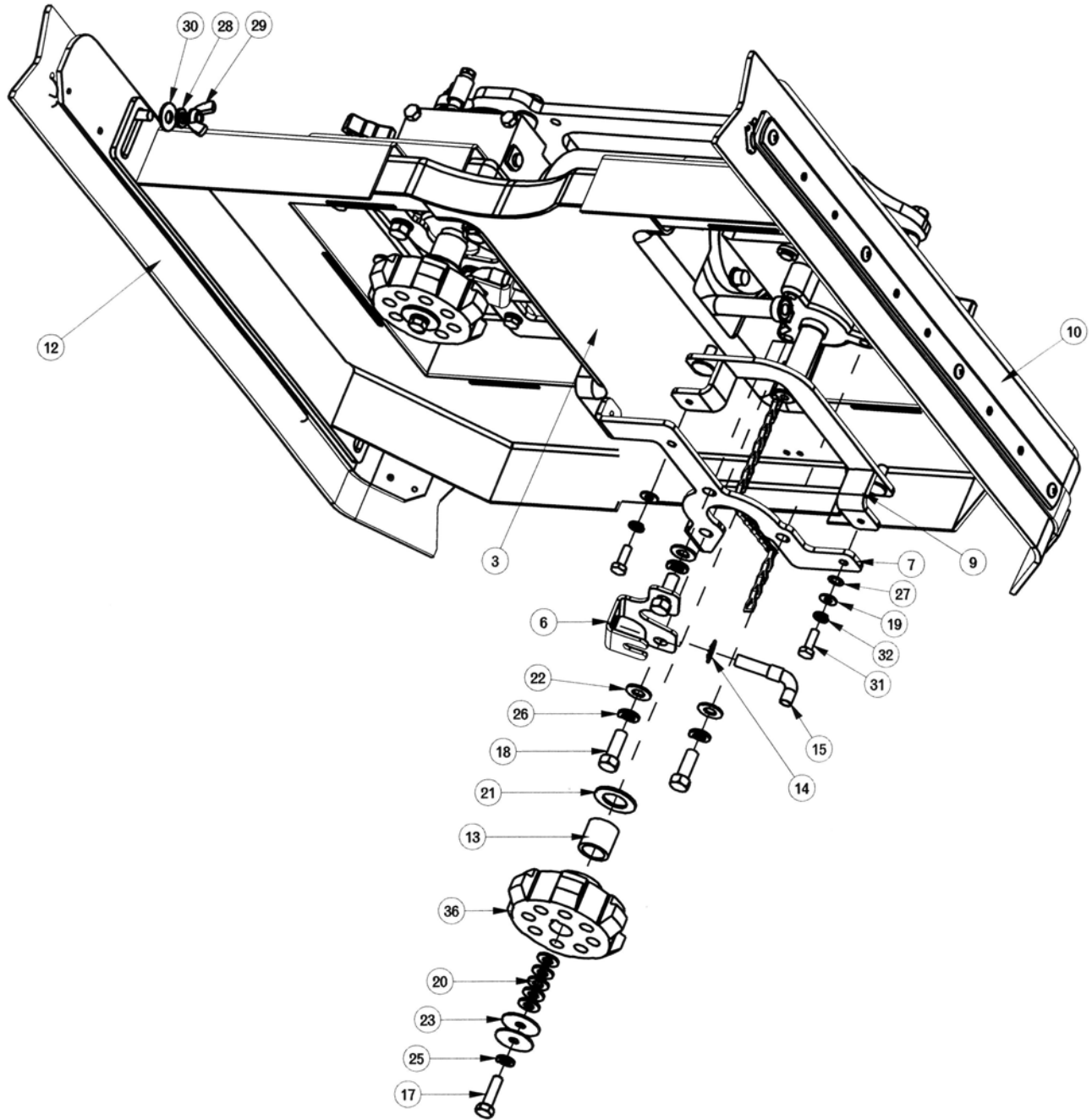
26" Cylindrical Scrub Deck Assembly II (Items 32-62)



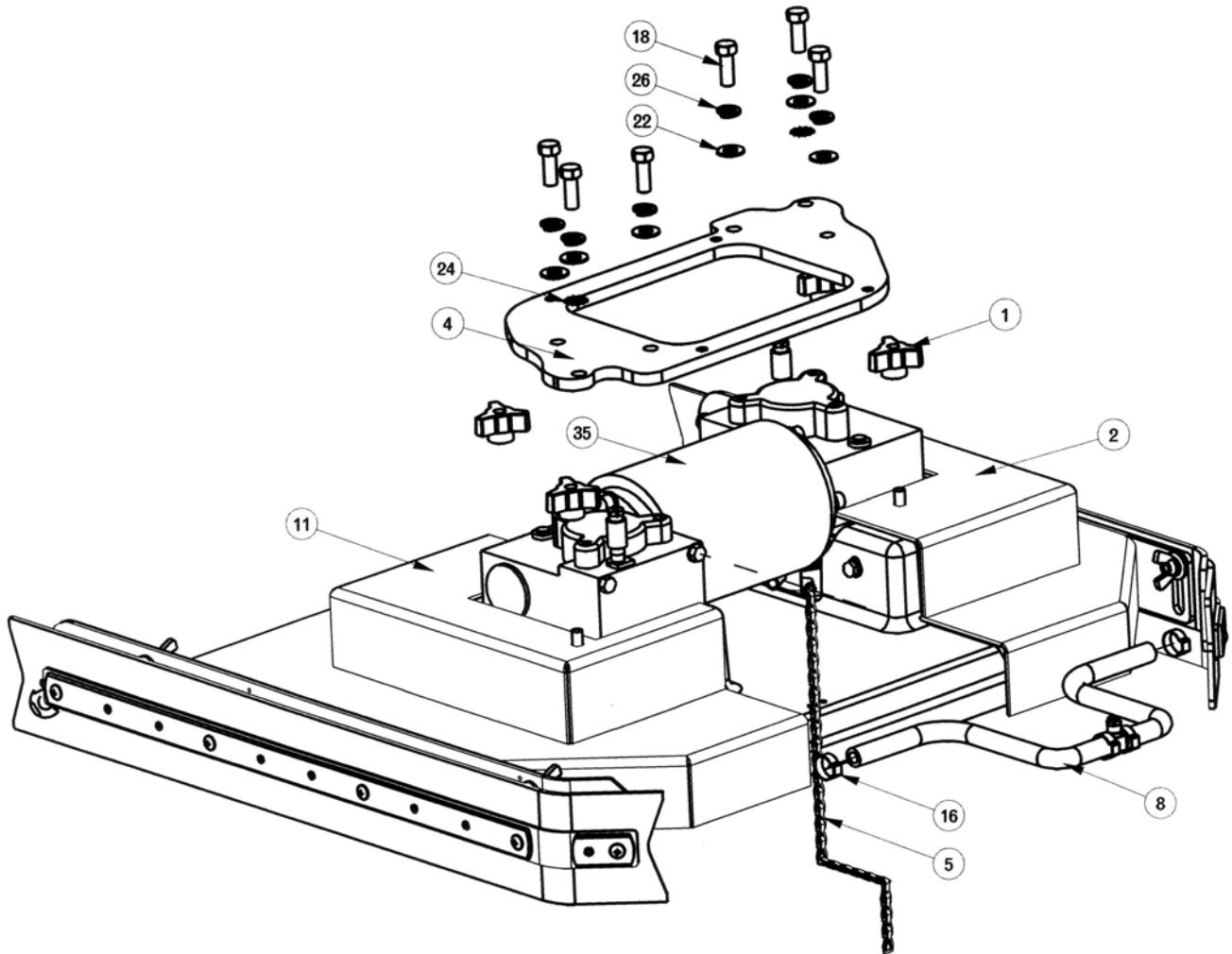
26" Cylindrical Scrub Deck BOM (See Assembly I & II)

BILL OF MATERIAL - 241703							
ITEM PART NO.	REQ'D	DESCRIPTION	ITEM PART NO.	REQ'D	DESCRIPTION		
1	210118	4	KNOB-3 SIDED 5/16 NYLOC	32	711003	8	SCR-SK 10-32 x .25
2	241503	1	CYLINDRICAL SCRUBDECK WELDMENT, SCV 26	33	711119	2	CLEVIS PIN 7/16 X 2-5/8
3	241512	1	SPRAY BAR, CYL SCRUBDECK, SCV 24/26	34	711210	8	BLT-HH 1/4-20 X 1.25 STPL
4	241542	2	UPPER SQUEEGEE MTG BRKT	35	711310	1	NUT, HEX 10-32 ST PL
5	241544	1	HINGE BRKT WLDMNT RH, SCV2426	36	711316	6	NUT-HEX 1/4-20 ST PL
6	241546	1	HINGE BRKT WLDMNT LH,SCV2426	37	711350	10	NUT NYLOC 10-32
7	241552	1	LOWER SIDE SQUEEGEE ASSY LH, SCV 24/26	38	711389	6	NUT-WING 1/4-20 STL ZINC
8	241553	1	LOWER SIDE SQUEEGEE ASSY RH, SCV 24216	39	711504	4	WSR-FLAT 1/4 ID SS
9	241554	1	UPPER SQUEE BRKT WMT LH, SCV 24/26	40	711505	6	WSR-FLAT 1/4
10	241598	8	MOTOR SPACER CYL DECK, SCV 24/26	41	711543	1	WSR - HELICAL #10
11	241961	1	DEBRIS BOX WMT, CYL SCRUBDECK 26"	42	711544	6	WSR-HELICAL 1/4
12	281023	2	BELT COVER, CYLINDRICAL SCRUBDECK	43	711623	4	SCR-MC IND. HH 10-24 X .50 STPL
13	281036	2	OFFSET PULLEY POLY V	44	711676	4	ROLL PIN, 3/8 x 3/4
14	281041	4	CHECK VALVE	45	711701	2	RETAINING RING, INT 1.37
15	281053	2	J BELT (POLY V) 18"	46	711704	2	INTERNAL RETAINING RING N5000-86 .875 DIA.
16	281058	2	BEARING 3/8" RADIAL	47	711724	4	3/8" RETAINING RING, EXTERNAL
17	281519	2	O-RING 1.62 X 2.00 X .188	48	711725	4	5/8" RETAINING RING, EXTERNAL
18	281544	2	TENSIONER ARM WELDMT	49	711808	2	COTTER PIN-HAIR #13
19	281548	2	BELT IDLER	50	712757	4	WSR - HELICAL #10 SS
20	281550	2	BEARING HOUSING, CYL SCRUB DECK	51	712764	4	WSR #10 SS
21	281557	1	DRAG CHAIN BRK'T, CYL. SCRUBDECK	52	748102	2	MOTOR 3/4 HP, 36V, 1800RPM
22	281558	1	DRAG CHAIN, CYL. SCRUBDECK	53	748141	1	CABLE WRAP, 11"
23	281606	1	SPRAY HEAD MTG BRKT	54	748215	1	CIRCUIT BRKR - SB50 GRAY HOUSING ONLY
24	281675	2	DRIVE HUB, CYLINDRICAL SCRUBDECK	55	829619	2	END PLUG
25	281676	2	DRIVEN PULLEY	56	833140	4	BODY INLET CONNECTOR
26	281681	2	IDLE SHAFT WMT	57	833141	4	CAP
27	281683	2	IDLE HUB ASSY	58	833142	4	GASKET CAP
28	361252	2	KEY, WOODRUFF, 3/16 SQ X .5	59	833325	1	FITTING NYLON 90 1/4MPT X 3/8HB
29	383558	2	BALL BEARING, RADIAL 5/8" R10	60	833605	2	V RING SEAL
30	430051	2	RETURN SPRING-3.00"	61	833611	2	END CAP
31	450122	2	UNIJET SPRAY TIP 6503	62	210118Y	2	KNOB-3 SIDED 5/16 NYLOC

24" Disc Scrub Deck Assembly I



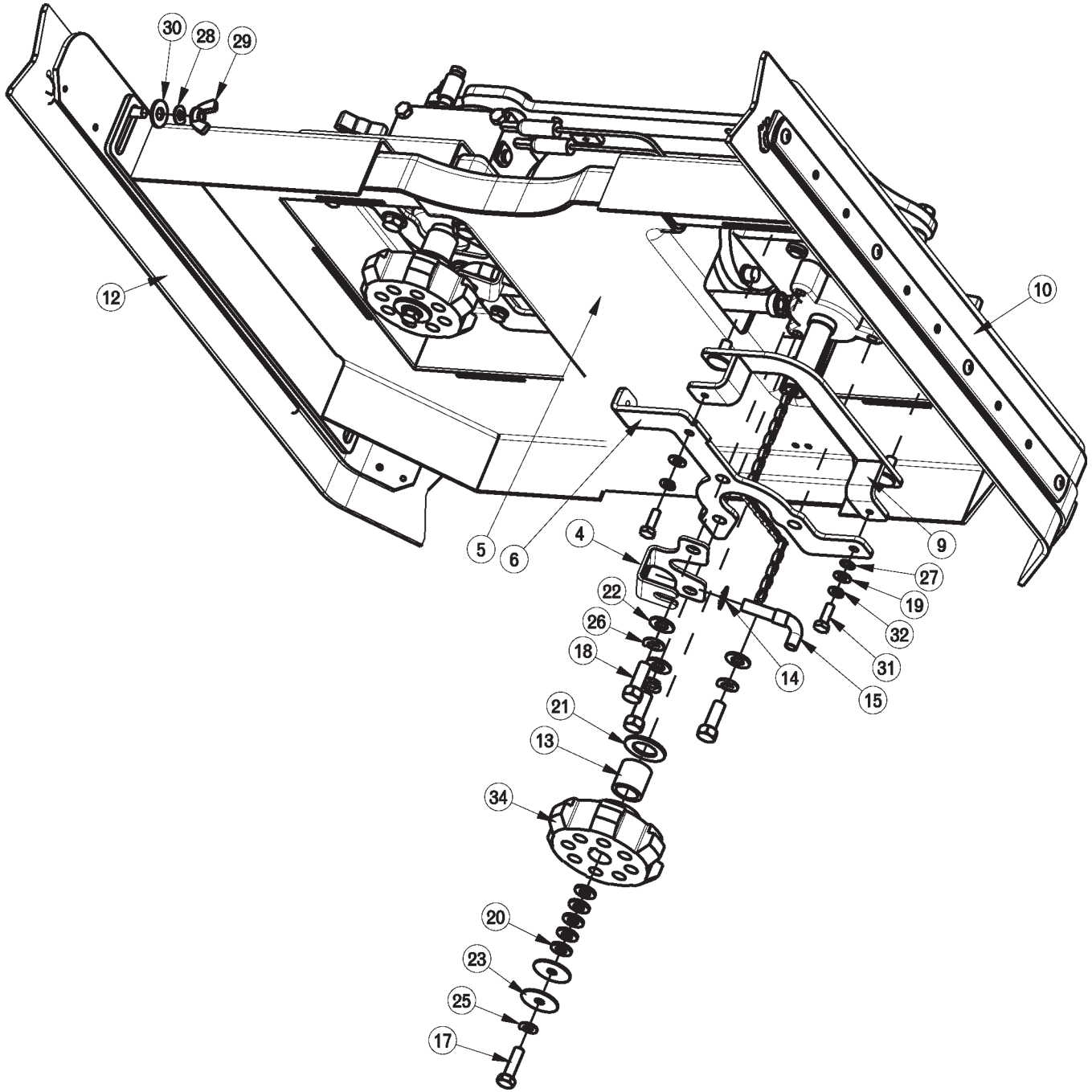
24" Disc Scrub Deck Assembly II



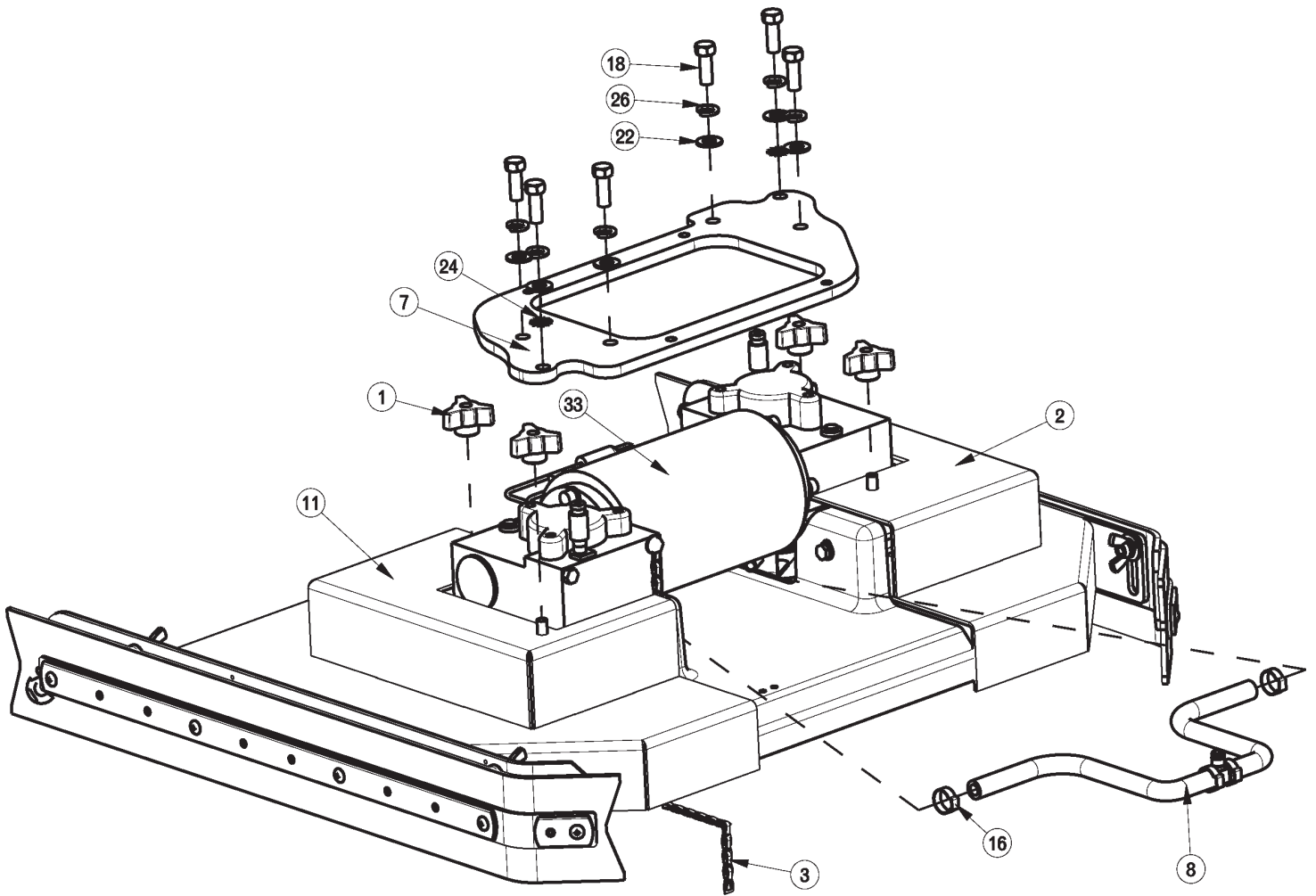
24" Disc Scrub Deck BOM (See Assembly I & II)

BILL OF MATERIAL - 241601			
ITEM	PART NO.	REQ'D	DESCRIPTION
1	210118	4	KNOB-3 SIDED 5/16 NYLOC
2	241603	1	RH DISK DECK COVER, SCV2426
3	241605	1	MOTOR SHROUD 24" DECK
4	241610	1	DISK SCRUBDECK MNTG PLATE, 24"
5	241628	1	DRAG CHAIN ASSY, DISK SCRUBDECK SCV 24/26
6	241653	2	WATER FEED BRKT, DISK, SCV24/26
7	241657	2	MOUNTING BRACKET, MOTOR COVER
8	241661	1	SOL. FEED HOSE SUB-ASSY, DISK
9	241662	2	COVER MNT BRKT, SCV 24/26 ASSY
10	241674	1	SIDE SQUEEGEE WIPE ASSY LH, SCV 24/26
11	241685	1	LH DISK DECK COVER, SCV 2426
12	241687	1	SIDE SQUEEGEE WIPE ASSY RH, SCV 24/26
13	281611	2	HUB-SCRUB SPACER TUBE
14	281633	2	SPEED NUT - 3/8"
15	281634	2	DISK SOLUTION FEED ASSY
16	450076	2	CRIMP CLAMP SS 185R
17	711231	2	BLT-HH 5/16-18X1.25 ST PL
18	711242	12	BLT-HEX 3/8 -16X1.00 ZP
19	711504	9	WSR-FLAT 1/4 ID SS
20	711506	10	WSR-FLT .344 X .690 X .062 STL ZINC
21	711512	2	WSR-FLAT .75X1.37X.08
22	711515	12	WSR-FLAT .406 X .812 X .0625
23	711516	4	WSR- FLAT .31 X 1.25 X .05
24	711539	2	WSR-EXTERNAL LOCK 3/8
25	711545	2	WSR-HELICAL 5/16
26	711546	12	WSR-HELICAL 3/8
27	711554	2	WSR-INTERNAL LOCK 1/4 ID
28	712140	4	WSR-HELICAL 5/16 SS
29	712157	4	NUT- WING 5/16-18 SS
30	712301	4	WSR-FLAT .87 X .38 X .06
31	712562	8	BOLT-HH 1/4-20X3/4 SS
32	712758	8	WSR-HELICAL 1/4 SS
33	740099	3	CABLE TIE - SMALL
34	748141	1	CABLE WRAP, 11"
35	748210-1	1	DUAL RIGHT ANGLE MOTOR 24" ASSY
36	3312402	2	HUB-SCRUB BRUSH DRIVE

26" Disc Scrub Deck Assembly I



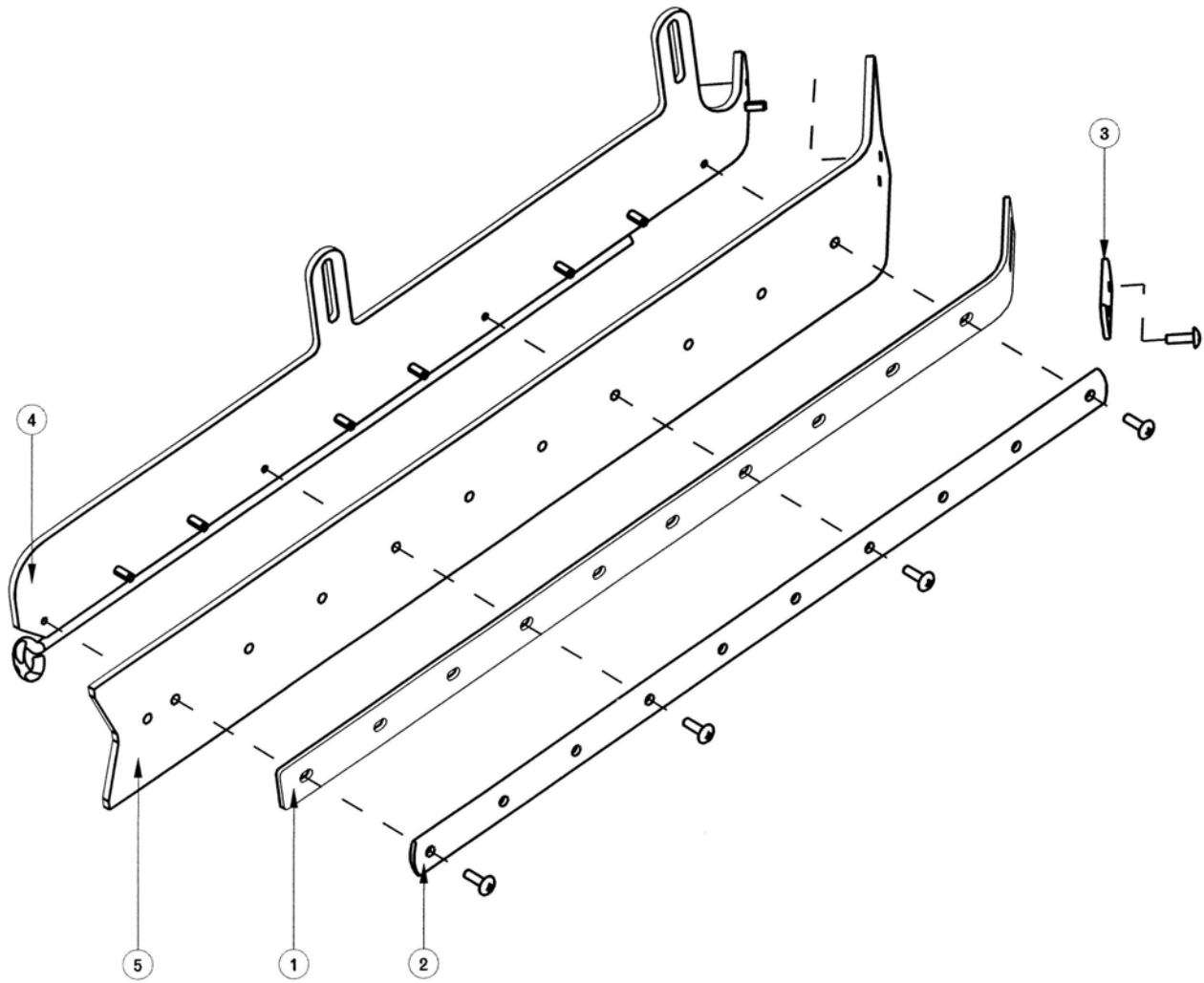
26" Disc Scrub Deck Assembly II



26" Disc Scrub Deck BOM (See Assembly I & II)

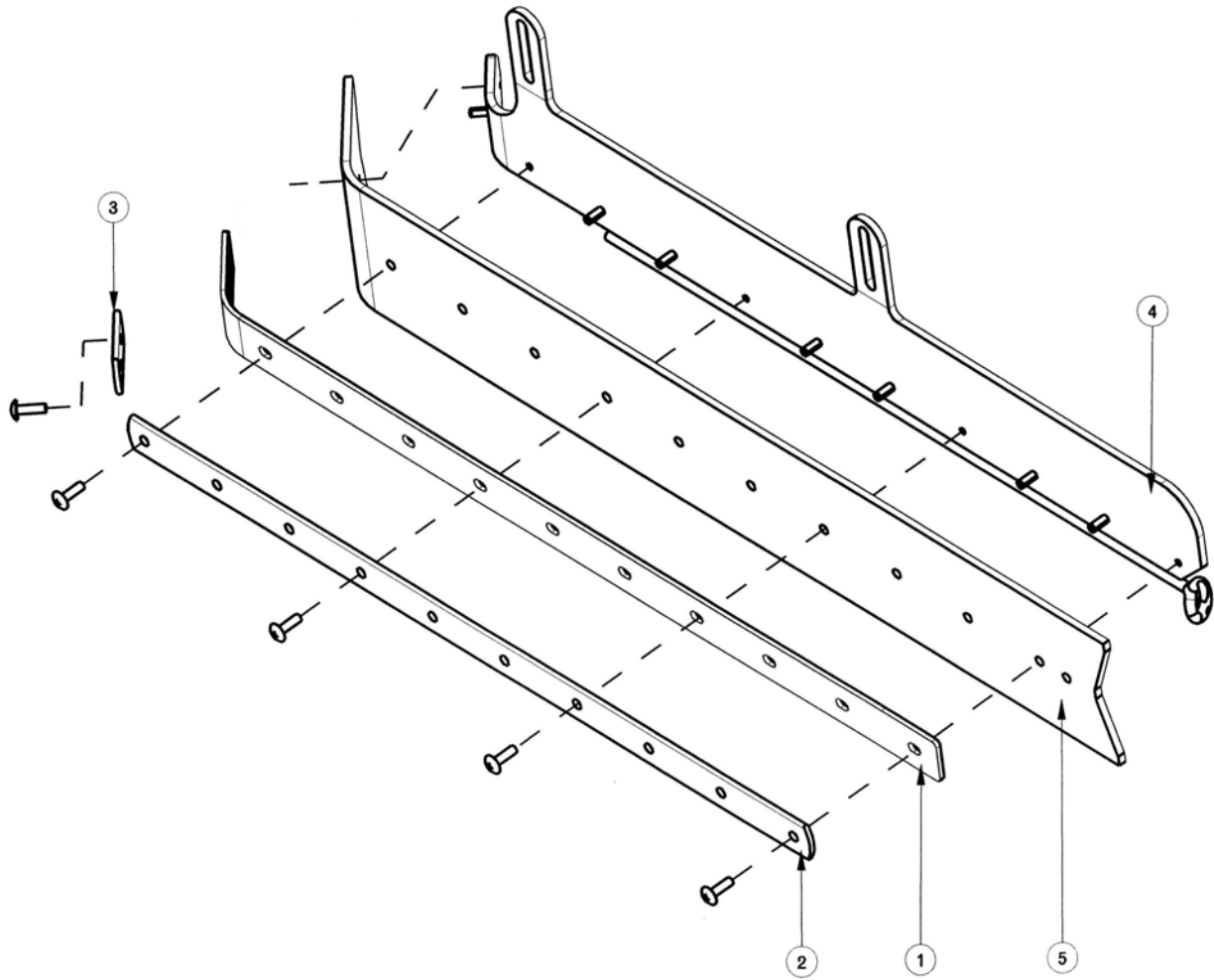
BILL OF MATERIAL - 241651			
ITEM	PART NO.	REQ'D	DESCRIPTION
1	210118	4	KNOB-3 SIDED 5/16 NYLOC
2	241603	1	RH DISK DECK COVER, SCV2426
3	241628	1	DRAG CHAIN ASSY, DISK SCRUBDECK SCV24/26
4	241653	2	WATER FEED BRKT, DISK, SCV24/26
5	241655	1	MOTOR SHROUD 26" DECK
6	241657	2	MOUNTING BRACKET, MOTOR COVER
7	241660	1	DISK SCRUBDECK MNTG PLATE, 26"
8	241661	1	SOL. FEED HOSE SUB-ASS'Y, DISK
9	241662	2	COVER MNT BRK'T, SCV 24/26 ASSY
10	241674	1	SIDE SQUEEGEE WIPE ASSY LH, SCV 24/26
11	241685	1	LH DISK DECK COVER, SCV 2426
12	241687	1	SIDE SQUEEGEE WIPE ASSY RH, SCV 24/26
13	281611	2	HUB-SCRUB SPACER TUBE
14	281633	2	SPEED NUT - 3/8"
15	281634	2	DISK SOLUTION FEED ASSY
16	450076	2	CRIMP CLAMP SS 185R
17	711231	2	BLT-HH 5/16-18X1.25 ST PL
18	711242	12	BLT-HEX 3/8 -16X1.00 ZP
19	711504	9	WSR-FLAT 1/4 ID SS
20	711506	10	WSR-FLT .344 X .690 X .062 STL Z
21	711512	2	WSR-FLAT .75X1.37X.08
22	711515	12	WSR-FLAT .406 X .812 X .0625
23	711516	4	WSR- FLAT .31 X 1.25 X .05
24	711539	2	WSR-EXTERNAL LOCK 3/8
25	711545	2	WSR-HELICAL 5/16
26	711546	12	WSR-HELICAL 3/8
27	711554	2	WSR-INTERNAL LOCK 1/4 ID
28	712140	4	WSR-HELICAL 5/16 SS
29	712157	4	NUT- WING 5/16-18 SS
30	712301	4	WSR-FLAT .37 X .87 X .06
31	712562	8	BOLT-HH 1/4-20X3/4 SS
32	712758	8	WSR-HELICAL 1/4 SS
33	748211-1	1	DUAL RIGHT ANGLE MOTOR 26" ASSY
34	3312402	2	HUB-SCRUB BRUSH DRIVE

Cylindrical Side Squeegee (Left Hand Side)



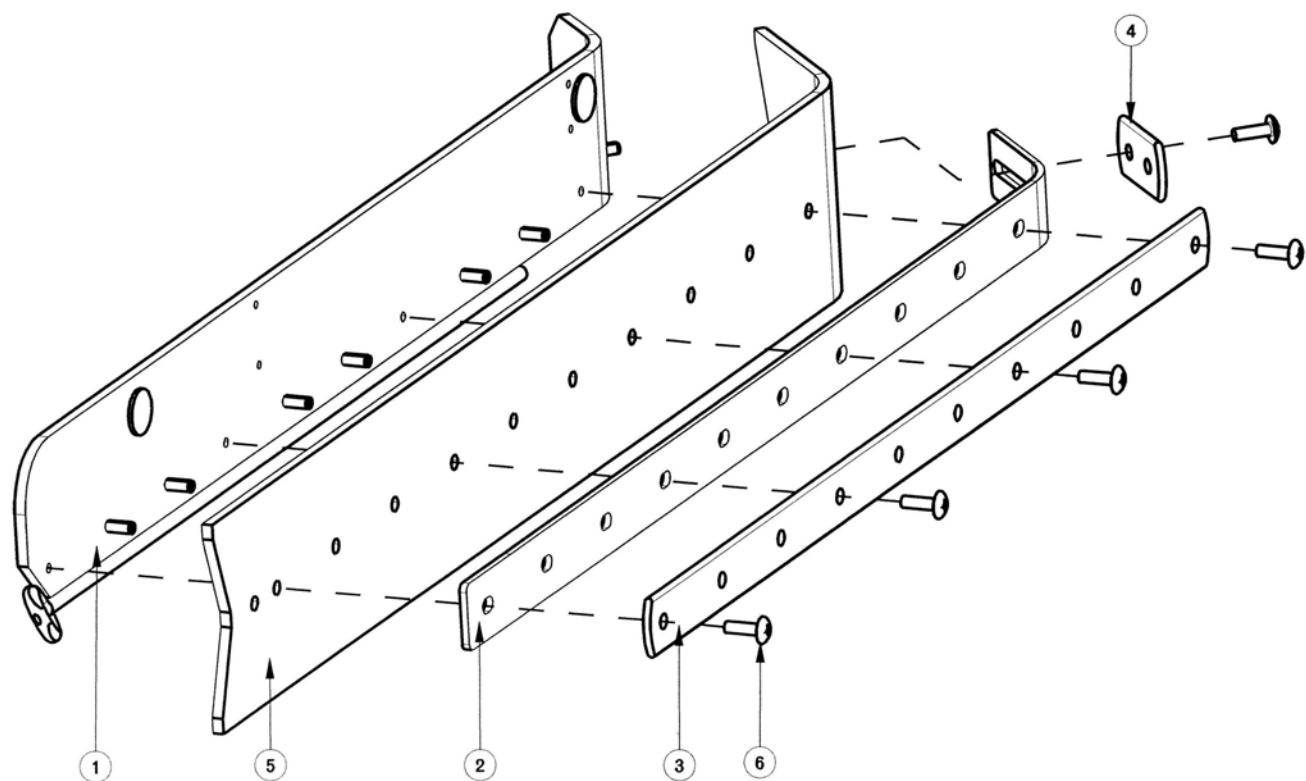
BILL OF MATERIAL - 241915			
ITEM	PART NO.	REQ'D	DESCRIPTION
1	241678	1	BACKER BLADE, LONG SCV 24/26
2	241679	1	RETAINER-LONG SIDE SQ SCV 24/26
3	241680	1	SHORT RETAINER, SIDE SQ SCV 24/26
4	241917	1	SIDE SQUEEGEE SUB-ASSY LH, SCV 24/26
5	241925	1	SIDE SQUEEGEE BLADE LINATEX, SCV 24/26
6	710154	5	SCR-MC TR HD 10-32 X .625 SS

Cylindrical Side Squeegee (Right Hand Side)



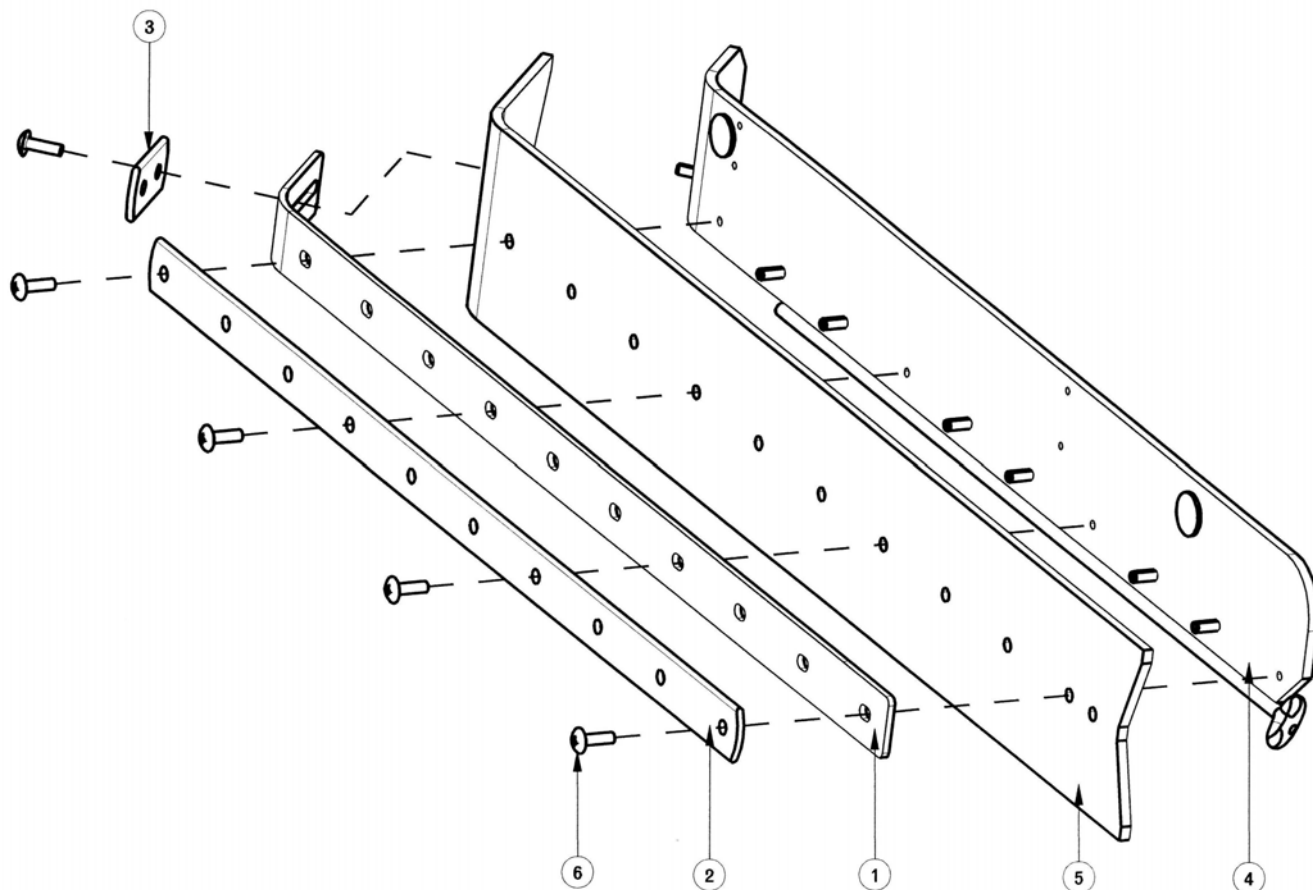
BILL OF MATERIAL - 241916			
ITEM	PART NO.	REQ'D	DESCRIPTION
1	241678	1	BACKER BLADE, LONG SCV 24/26
2	241679	1	RETAINER-LONG SIDE SQ SCV 24/26
3	241680	1	SHORT RETAINER, SIDE SQ SCV 24/26
4	241918	1	SIDE SQUEEGEE SUB-ASSY RH, SCV 24/26
5	241925	1	SIDE SQUEEGEE BLADE LINATEX, SCV 24/26
6	710154	5	SCR-MC TR HD 10-32 X .625 SS

Disc Side Squeegee (Left Hand Side)



BILL OF MATERIAL - 241674			
ITEM	PART NO.	REQ'D	DESCRIPTION
1	241675	1	DISK SQUEEGEE SUB-ASSY LH, SCV 24/26
2	241678	1	BACKER BLADE, LONG SCV 24/26
3	241679	1	RETAINER-LONG SIDE SQ SCV 24/26
4	241680	1	SHORT RETAINER, SIDE SQ SCV 24/26
5	241925	1	SIDE SQUEEGEE BLADE LINATEX, SCV 24/26
6	710154	5	SCR-MC TR HD 10-32 X .625 SS

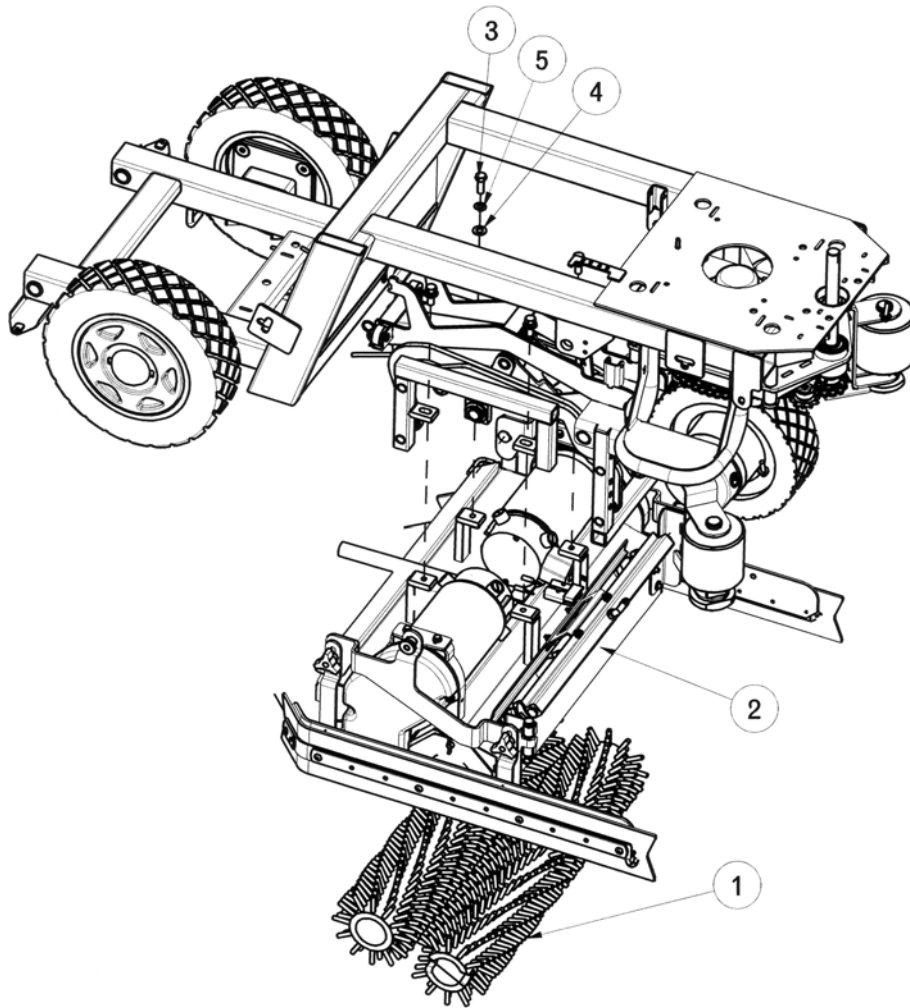
Disc Side Squeegee (Right Hand Side)



BILL OF MATERIAL - 241687

ITEM	PART NO.	REQ'D	DESCRIPTION
1	241678	1	BACKER BLADE, LONG SCV 24/26
1	241679	1	RETAINER-LONG SIDE SQ SCV 24/26
1	241680	1	SHORT RETAINER, SIDE SQ SCV 24/26
1	241688	1	DISK SQUEEGEE SUB-ASSY RH, SCV 24/26
1	241925	1	SIDE SQUEEGEE BLADE LINATEX, SCV 24/26
1	710154	5	SCR-MC TR HD 10-32 X .625 SS

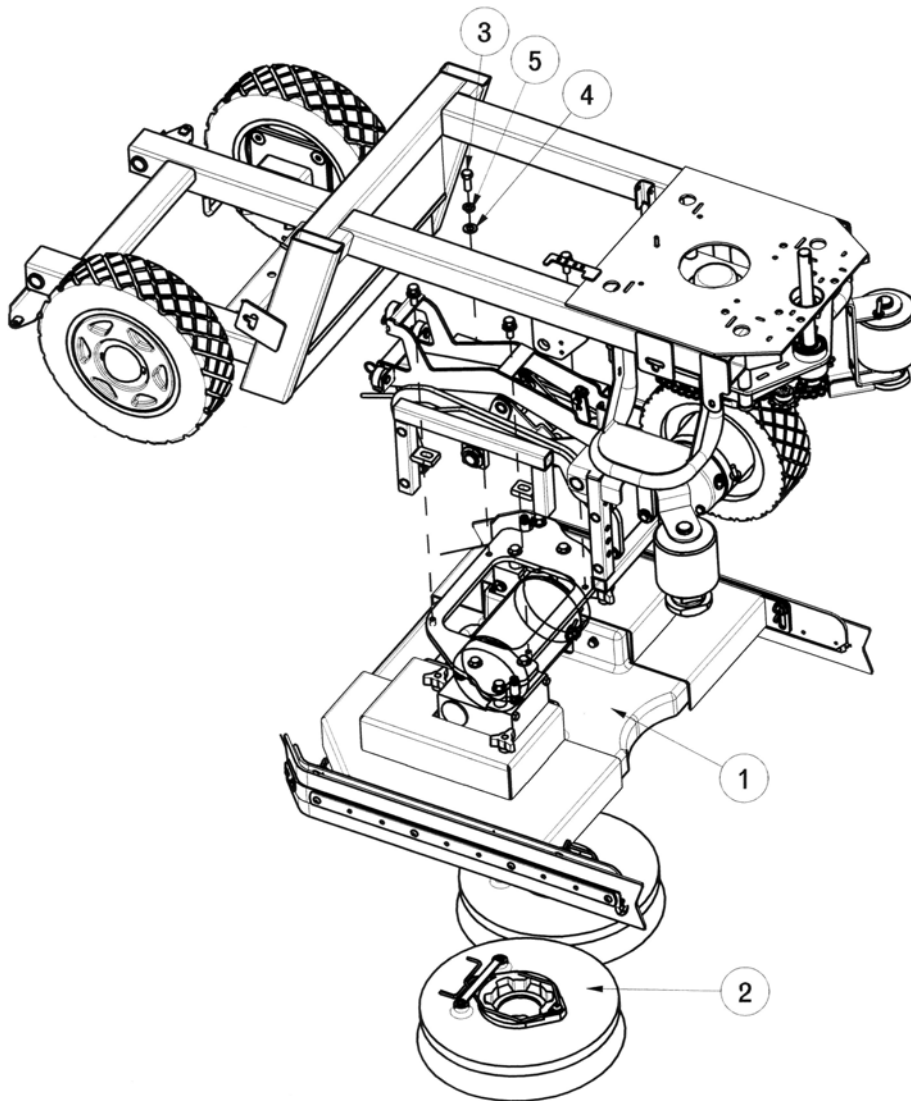
24" Cylindrical Brush Assembly



BILL OF MATERIAL

ITEM	PART NO.	REQ'D	DESCRIPTION
1	241520	2	BRUSH, CYL 24" .022 NYLON
1A	241521	2	BRUSH, CYL 24" .028 NYLON
1B	241522	2	BRUSH, CYL 24" .026 PP
1C	241523	2	BRUSH, CYL 24" .028 PP
1D	241524	2	BRUSH, CYL 24" DYNASCRUB 500GR
1E	241525	2	BRUSH, CYL 24" POWERSCRUB 120GR
1F	241526	2	BRUSH, CYL 24" NYLOGRIT 80GR
1G	241527	2	BRUSH, CYL 24" STRATAGRIT 46GR
1H	241528	2	BRUSH, CYL 24" STRGRIT PLUS 36
1I	241529	2	BRUSH, CYL 24" 180 GR
2	241702	1	24" CYL DECK W/ SIDE SQUEEGEES, SCV 24/26
3	711242	4	BLT-HEX 3/8-16X1.00 ZP
4	711515	4	WSR-FLAT .406 X .812 X .0625
5	711546	4	WSR-HELICAL 3/8

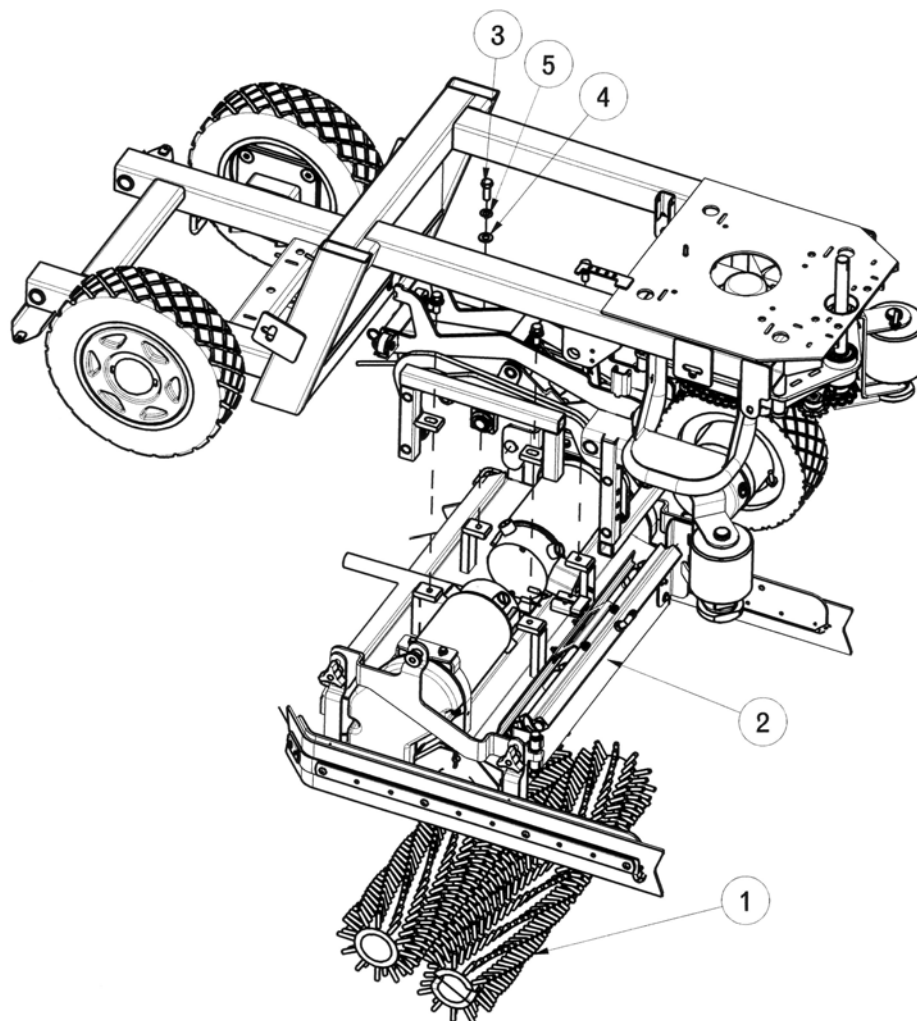
24" Disc Brush Assembly



BILL OF MATERIAL

ITEM	PART NO.	REQ'D	DESCRIPTION
1	241601	1	DISK SCRUBDECK, 24"
2	241618	2	BRUSH - 12" PWR DRIVE W/ PAD HOLDER
2A	241620	2	12" SCRUB BRUSH .022 NYLON
2B	241621	2	12" SCRUB BRUSH .028 NYLON
2C	241622	2	12" SCRUB BRUSH DYNASCRUB 500GR
2D	241623	2	12" SCRUB BRUSH POWERSCRUB 120GR
2E	241624	2	12" SCRUB BRUSH NYLOGRIT 80GR
2F	241625	2	12" SCRUB BRUSH STRATAGRIT 46GR
2G	241626	2	12" SCRUB BRUSH 180GR
3	711242	4	BLT-HEX 3/8-16X1.00 ZP
4	711515	4	WSR-FLAT .406 X .812 X .0625
5	711546	4	WSR-HELICAL 3/8

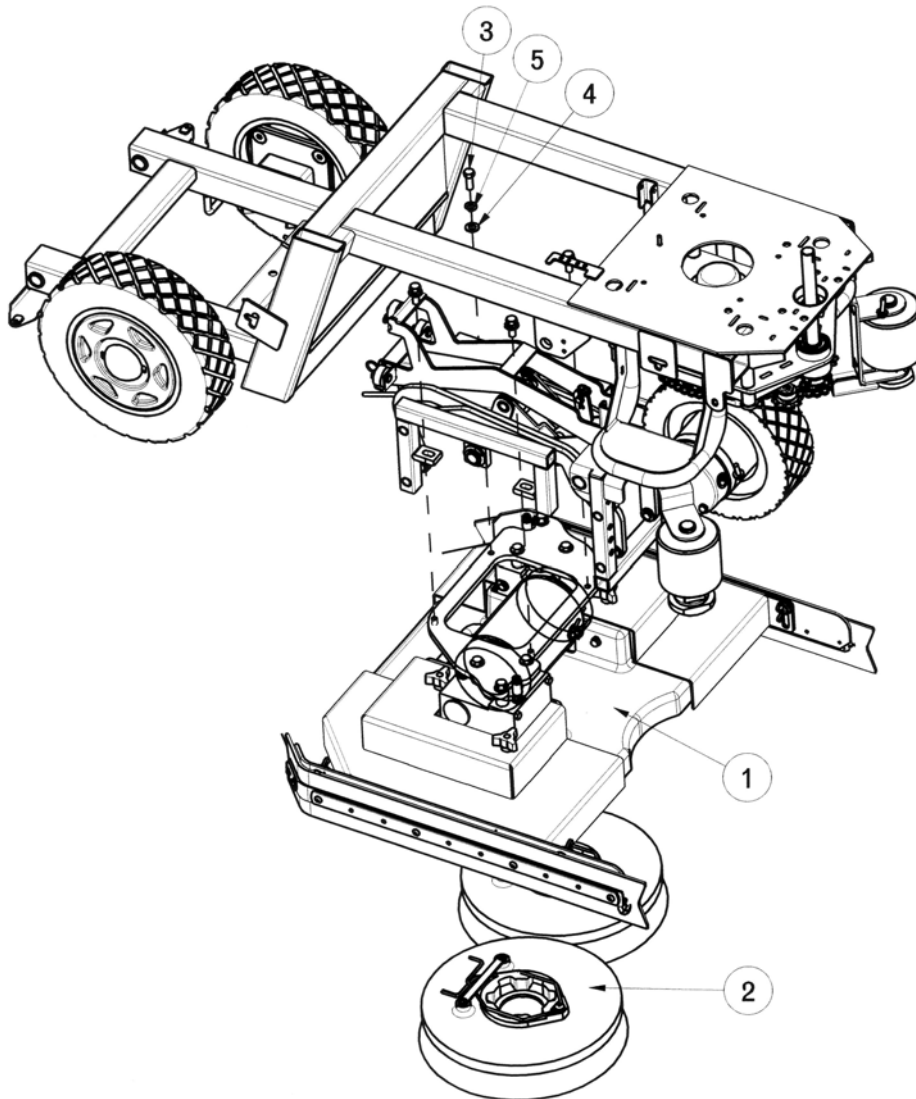
26" Cylindrical Brush Assembly



BILL OF MATERIAL

ITEM	PART NO.	REQ'D	DESCRIPTION
1	241530	2	BRUSH, CYL 26" .022 NYLON
1A	241531	2	BRUSH, CYL 26" .028 NYLON
1B	241532	2	BRUSH, CYL 26" .026 PP
1C	241533	2	BRUSH, CYL 26" .028 PP
1D	241534	2	BRUSH, CYL 26" DYNASCUB 500GR
1E	241535	2	BRUSH, CYL 26" POWERSCRUB 120GR
1F	241536	2	BRUSH, CYL 26" NYLOGRIT 80GR
1G	241537	2	BRUSH, CYL 26" STRATAGRIT 46GR
1H	241538	2	BRUSH, CYL 26" STRGRIT PLUS 36
1I	241539	2	BRUSH, CYL 26" 180 GR
2	241703	1	26" CYL DECK W/ SIDE SQUEEGEES, SCV 24/26
3	711242	4	BLT-HEX 3/8-16X1.00 ZP
4	711515	4	WSR-FLAT .406 X .812 X .0625
5	711546	4	WSR-HELICAL 3/8

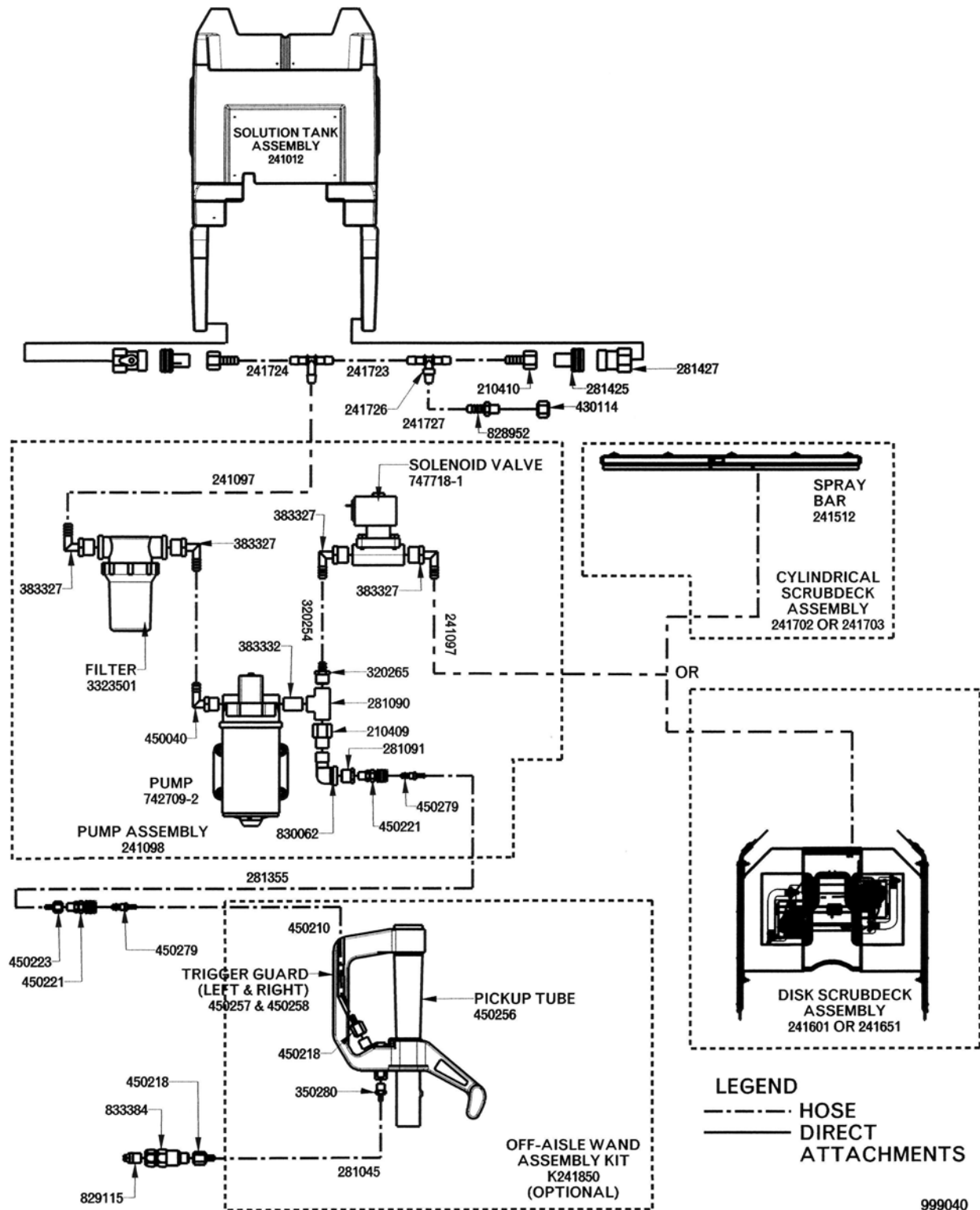
26" Disc Brush Assembly

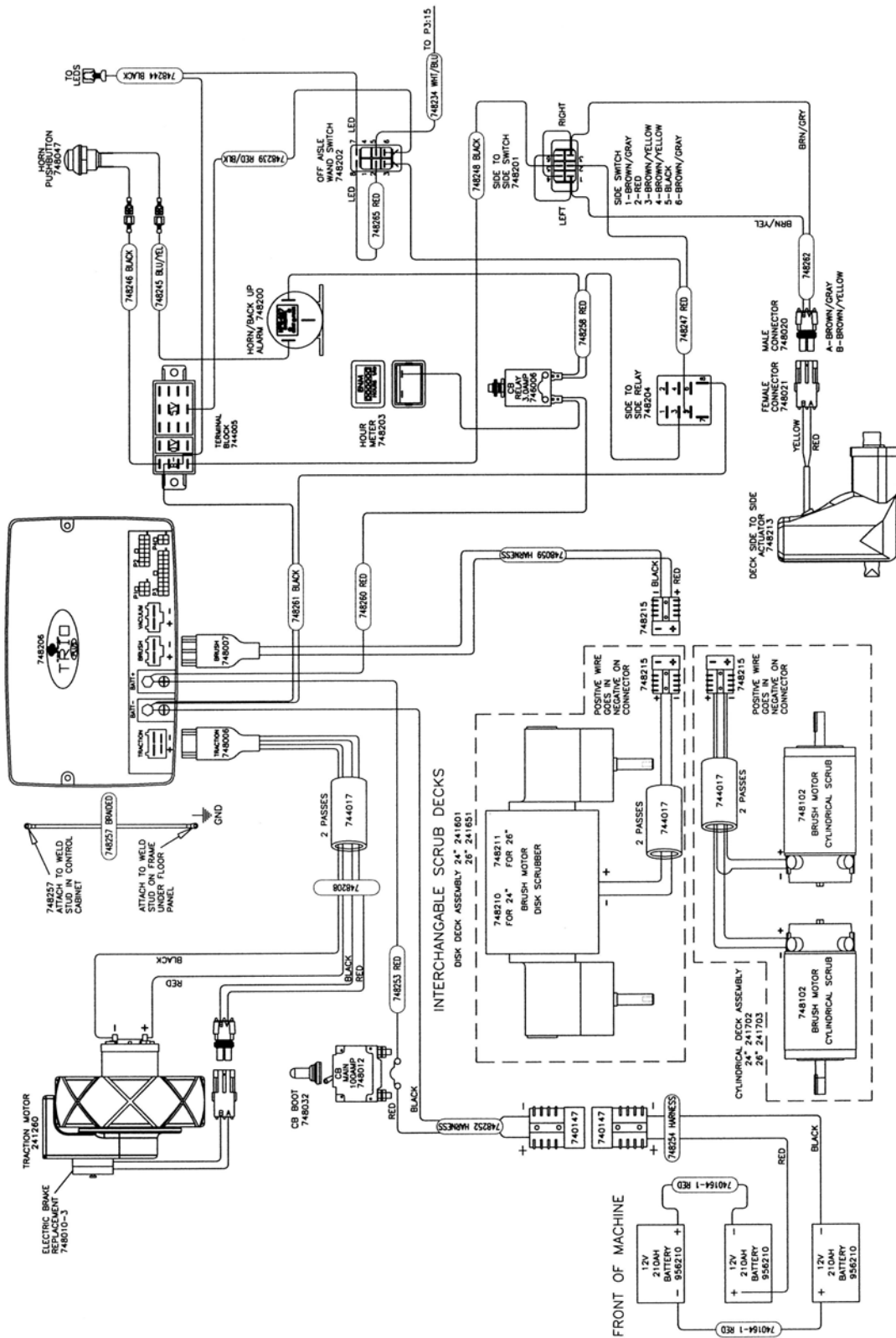


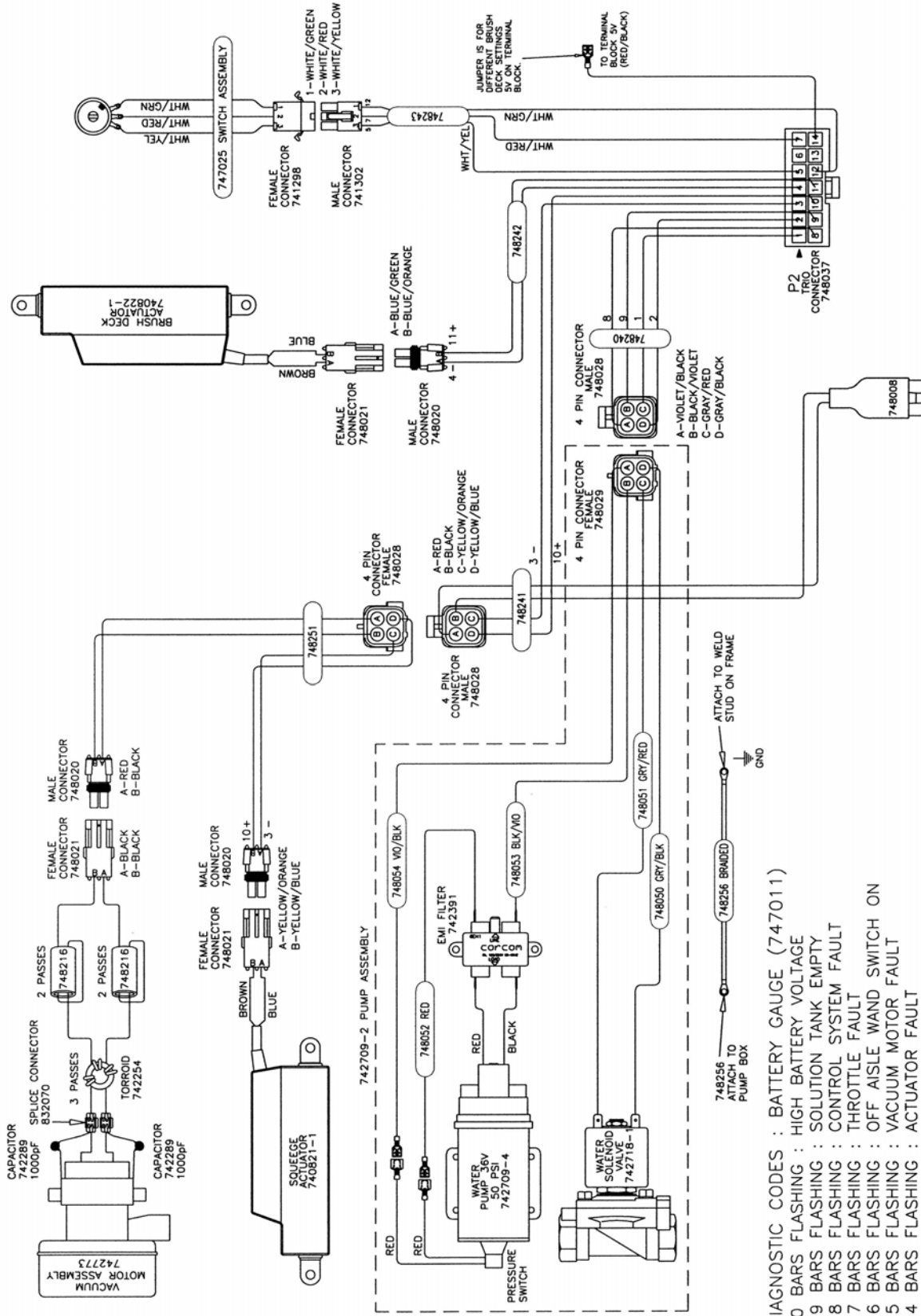
BILL OF MATERIAL

ITEM	PART NO.	REQ'D	DESCRIPTION
1	241651	1	DISK SCRUBDECK, 26"
2	241619	2	BRUSH - 13" PWR DRIVE W/ PAD HOLDER
2A	241630	2	13" SCRUB BRUSH .022 NYLON
2B	241631	2	13" SCRUB BRUSH .028 NYLON
2C	241632	2	13" SCRUB BRUSH DYNASCRUB 500GR
2D	241633	2	13" SCRUB BRUSH POWERSCRUB 120GR
2E	241634	2	13" SCRUB BRUSH NYLOGRIT 80GR
2F	241635	2	13" SCRUB BRUSH STRATAGRIT 46GR
2G	241636	2	13" SCRUB BRUSH 180GR
3	711242	4	BLT-HEX 3/8-16X1.00 ZP
4	711515	4	WSR-FLAT .406 X .812 X .0625
5	711546	4	WSR-HELICAL 3/8

Plumbing Diagram







DIAGNOSTIC CODES : BATTERY GAUGE (747011)

- 10 BARS FLASHING : HIGH BATTERY VOLTAGE
- 9 BARS FLASHING : SOLUTION TANK EMPTY
- 8 BARS FLASHING : CONTROL SYSTEM FAULT
- 7 BARS FLASHING : THROTTLE FAULT
- 6 BARS FLASHING : OFF AISLE WAND SWITCH ON
- 5 BARS FLASHING : VACUUM MOTOR FAULT
- 4 BARS FLASHING : ACTUATOR FAULT
- 3 BARS FLASHING : TRACTION MOTOR FAULT
- 2 BARS FLASHING : BRUSH MOTOR FAULT
- 1 BAR FLASHING : LOW BATTERY VOLTAGE
- 10 BARS RIPPLING UP AND DOWN: THROTTLE IS DISPLACED ON START UP

KEY SWITCH

PIN #	HARNESS COLOR	FUNCTION
1	RED/VIOLET	POSITIVE TO LEDS
2	RED/VIOLET	E-STOP-TRIO KSI P3:18
3	RED/WHITE	+V FROM TRIO P3:8
4	EMPTY	-

MODE SELECTOR SWITCH

SWT #	PIN #	COLOR	FUNCTION
1	1	YELLOW/BLACK	HEAVY SCRUB
2	2	YELLOW/RED	LIGHT SCRUB
3	3	YELLOW/GRAY	DOUBLE SCRUB
4	4	YELLOW/WHITE	VACUUM ONLY
5	5	YELLOW	TRANSPORT
C	6	RED/BLACK	SWITCH REF 5V

BATTERY GAUGE

PIN #	COLOR	FUNCTION
1	RED/VIOLET	SWITCHED 36VDC:P3-18
2	RED/YELLOW	SIGNAL: P3-6
3	BLACK/RED	SIGNAL REF 0V
4	GREEN/YELLOW	ESD DISCHARGE

REVERSE SWITCH

PIN #	COLOR	FUNCTION
1	YELLOW/VIOLET	REVERSE
2	RED/BLACK	HIGH SWITCH REF 5VDC
3	EMPTY	-
4	RED/VIOLET	REVERSE LED
5	RED/VIOLET	KEY SWITCH ON
6	RED/VIOLET	FORWARD LED

SIDE TO SIDE SWITCH

PIN #	COLOR	FUNCTION
1	BROWN/GRAY	SIDE ACTUATOR
2	RED	BATTERY 36VDC
3	BROWN/YELLOW	SIDE ACTUATOR
4	BROWN/YELLOW	SIDE ACTUATOR
5	BLACK	BATTERY 0VDC
6	BROWN/GRAY	SIDE ACTUATOR

P2: TRIO CONNECTOR

PIN #	COLOR	FUNCTION
1	GRAY/RED	WATER SOLENOID VALVE
2	GRAY/BLACK	WATER SOLENOID VALVE
3	YELLOW/ORANGE	SQUEEGE ACTUATOR
4	BLUE/GREEN	BRUSH ACTUATOR
5	WHITE/YELLOW	WATER FLOW POTENTIOMETER (SLOW)
6	-	-
7	WHITE/RED	WATER FLOW POTENTIOMETER (WIPER)
8	VIOLET/BLACK	WATER PUMP
9	BLACK/VIOLET	WATER PUMP
10	YELLOW/BLUE	SQUEEGE ACTUATOR
11	BLUE/ORANGE	BRUSH ACTUATOR
12	WHITE/GREEN	WATER FLOW POTENTIOMETER (FAST)
13	-	-
14	ORANGE/VIOLET	BRUSH DECK PRESSURE SET

P3: TRIO CONNECTOR

PIN #	COLOR	FUNCTION
1	YELLOW/RED	5 MODE SWITCH: LIGHT SCRUB
2	YELLOW/BLACK	5 MODE SWITCH: HEAVY SCRUB
3	YELLOW	5 MODE SWITCH: TRANSPORT
4	-	-
5	BLUE/WHITE	DECK RAISE/LOWER SWITCH
6	RED/YELLOW	BATTERY GAUGE SIGNAL
7	GRAY/YELLOW	HOUR METER
8	RED/WHITE	ON/OFF REF (B+)
9	BLACK/ORANGE	SPEED POTENTIOMETER (SLOW)
10	BLACK/PINK	SPEED POT./SEAT SAFETY SWITCH
11	YELLOW/WHITE	5 MODE SWITCH: VACUUM ONLY
12	YELLOW/GRAY	5 MODE SWITCH: DOUBLE SCRUB
13	YELLOW/VIOLET	REVERSE SWITCH
14	BROWN/GREEN	SOLUTION TANK EMPTY FLOAT SWITCH
15	WHITE/BLUE	OFF AISLE WAND
16	RED/BLACK	HIGH SWITCH REF 5VDC
17	BROWN/BLACK	BACK UP ALARM
18	RED/VIOLET	ON/OFF INPUT-KEY SWITCH
19	BLACK/RED	LOW SWITCH REF 0VDC
20	BLACK/WHITE	SPEED POTENTIOMETER (FAST)

MISCELLANEOUS

COLOR	FUNCTION
RED	BATTERY 36VDC
BLACK	BATTERY 0VDC
RED/BLACK	HIGH SWITCH REF 5VDC
BLACK/RED	LOW SWITCH REF 0V
BLUE/YELLOW	HORN

Minuteman International Made Simple Commercial Limited Warranty

Minuteman International, Inc. warrants to the original purchaser/user that the product is free from defects in workmanship and materials under normal use. Minuteman will, at its option, repair or replace without charge, parts that fail under normal use and service when operated and maintained in accordance with the applicable operation and instruction manuals. All warranty claims must be submitted through and approved by factory authorized repair stations.

This warranty does not apply to normal wear, or to items whose life is dependent on their use and care, such as belts, cords, switches, hoses, rubber parts, electrical motor components or adjustments. Parts not manufactured by Minuteman are covered by and subject to the warranties and/or guarantees of their manufacturers. Please contact Minuteman for procedures in warranty claims against these manufacturers.

Special warning to purchaser -- Use of replacement filters and/or prefilters not manufactured by Minuteman or its designated licensees, will void all warranties expressed or implied. A potential health hazard exists without original equipment replacement.

All warranted items become the sole property of Minuteman or its original manufacturer, whichever the case may be.

Minuteman disclaims any implied warranty, including the warranty of merchantability and the warranty of fitness for a particular purpose. Minuteman assumes no responsibility for any special, incidental or consequential damages.

This limited warranty is applicable only in the U.S.A. and Canada, and is extended only to the original user/purchaser of this product. Customers outside the U.S.A. and Canada should contact their local distributor for export warranty policies. Minuteman is not responsible for costs or repairs performed by persons other than those specifically authorized by Minuteman. This warranty does not apply to damage from transportation, alterations by unauthorized persons, misuse or abuse of the equipment, use of non-compatible chemicals, or damage to property, or loss of income due to malfunctions of the product.

If a difficulty develops with this machine, you should contact the dealer from whom it was purchased.

This warranty gives you specific legal rights, and you may have other rights which vary from state to state. Some states do not allow the exclusion or limitation of special, incidental or consequential damages, or limitations on how long an implied warranty lasts, so the above exclusions and limitations may not apply to you.

Cord Electric Group..... Three years parts, two years labor, ninety days travel (Not to exceed two hours)
Exceptions..... Port-A-Scrub, one year parts, six months labor
MPV 13, one year parts
MPV 14 and 18, two years parts, one year labor
RapidAir blower, one year parts, one year labor
Explosion-Proof Vacuum, one year parts, one year labor
Pneumatic Vacuums, three years parts, one year labor
EX 12 and EX12H, one year parts, one year labor

Battery Operated Group..... Three years parts, two years labor, ninety days travel
(Not to exceed two hours)
Exceptions..... Sweepers, one year parts, one year labor, ninety days travel
(Not to exceed two hours)

Internal Combustion Group.... One year parts, one year labor, ninety day travel
(Not to exceed two hours)

Replacement Parts.....Ninety days
Batteries.....0-3 months replacement, 4-12 months pro-rate
Polypropylene Plastic Tanks...Ten years, no additional labor